

Eastpark 70 Building

by *All West Surface Prep*

Aurora, CO (2019) / Ashford Formula / Bob Cuje

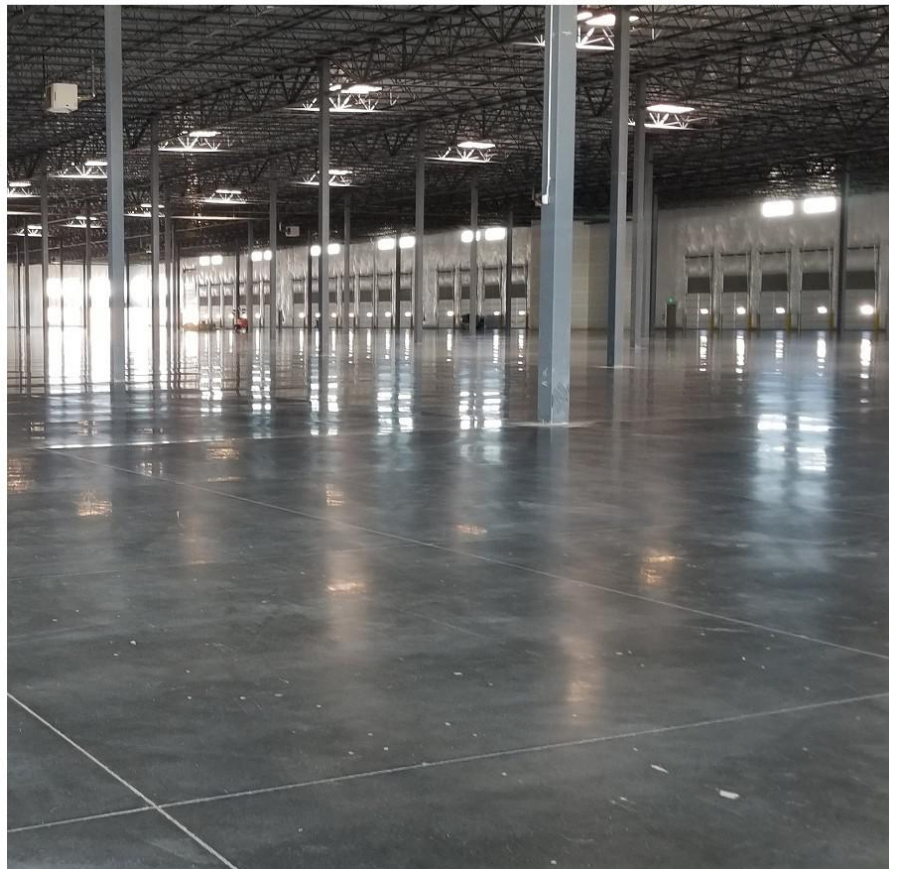
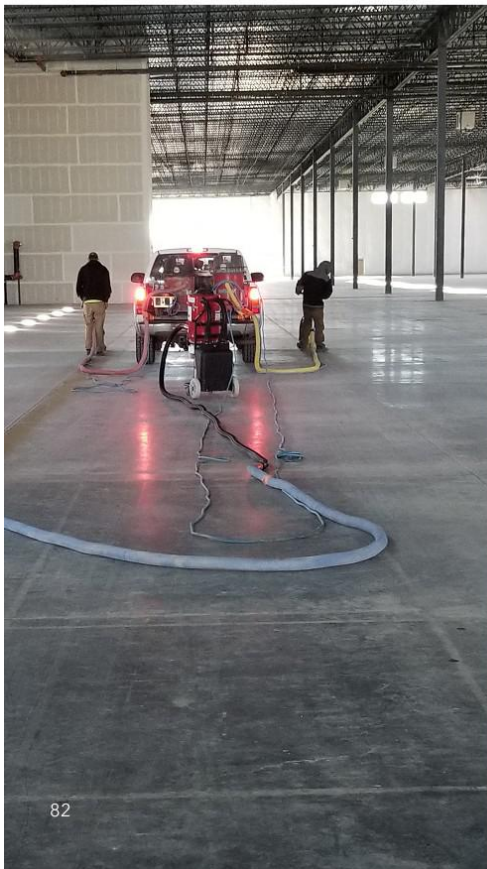
This project began with a phone call to fix a very odd problem. A company in Aurora, Colorado poured a floor between January and February 2018. During that time, the city experienced a bout of very high winds over the course of a few days. It was determined that wind dusted the floor with tiny rocks and sediment sometime during the power troweling phase. These sedimentary particles created weak points in the top membrane (cap) of the slab.

During the cleaning phase, these weak points gave way to reveal small, shallow, pockmark-like holes, ranging in size from 1/16 to 3/4 of an inch in width and between 1/32 and 1/8 inches in depth. These holes were present throughout the entire 250,000 square foot facility, along with saw scum lines, wind cracking and broadcast lines from wall forms being glued to the slab.

Apart from these issues, the floor had a well-executed hard trowel finish with a trowel burned shine. Core testing showed the floor was structurally sound and up to specification. However, the client decided that removing the pockmark holes were necessary, fearing the potential spread of the problem and the creation of unforeseen issues in the future. Beyond eliminating the holes, any results achieved with shine or cleaning the slab overall would be a bonus to the client.

There were three objectives to achieving the result desired by the owner:

1. Removal of the pockmarks via "heavy" grinding. The initial grind needed to be aggressive enough to remove the holes, while not creating too much work and expense to achieve a shine on the back-end. While the client





PROJECT
HIGHLIGHTS
2020



PROJECT HIGHLIGHTS 2020

"I'm grateful for the good people that I work with, who have put their heart and soul into what they're doing and the loyalty which they've given. We feel a real responsibility and obligation to those who have dedicated their efforts to making Curecrete a better business, and we will take care of our responsibilities with them."

Jerald W. Jones, Owner



1203 SPRING CREEK PLACE, SPRINGVILLE, UTAH 84663

801-489-5663 WWW.CURECRETE.COM



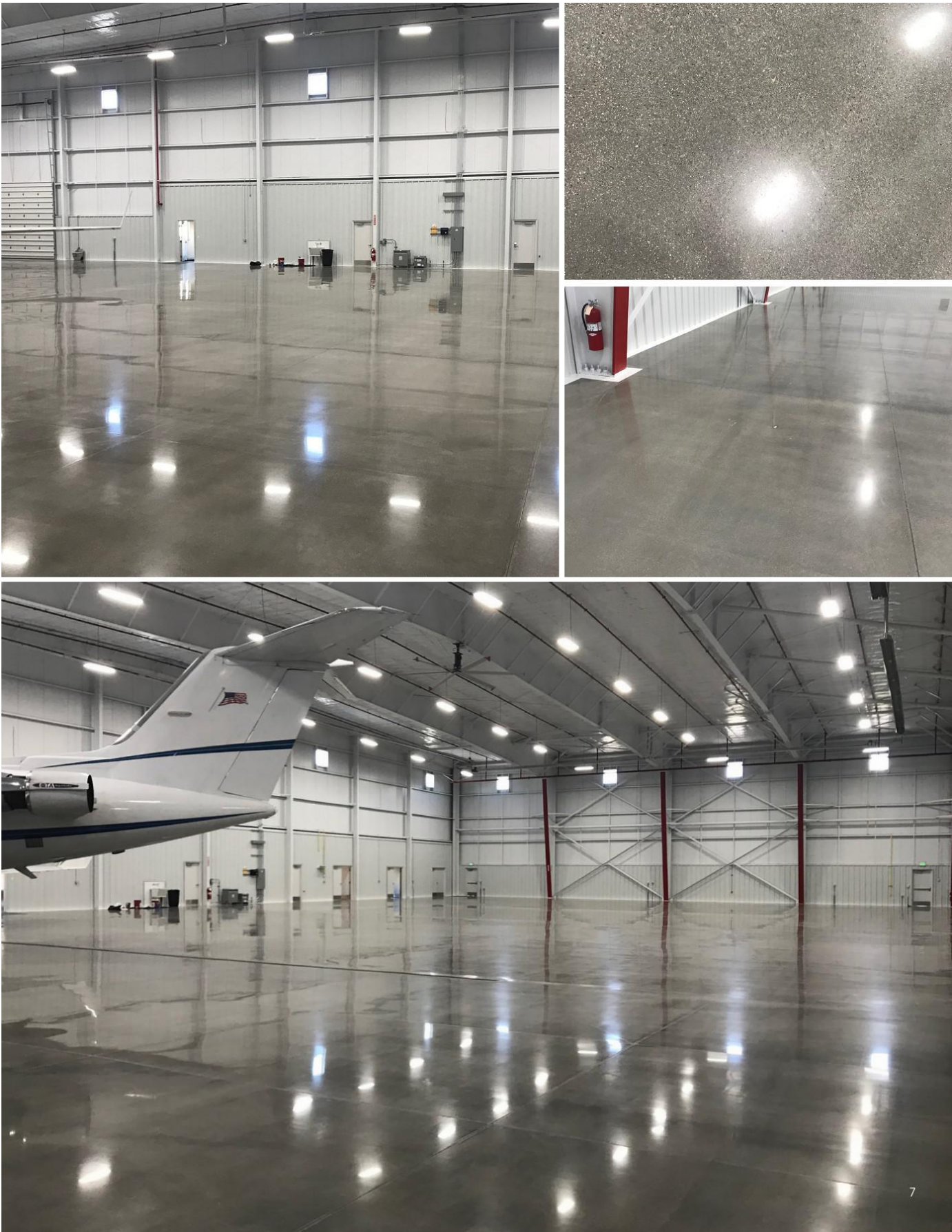
Project Highlights

AVIATION |

TAC Air

by *CDC Restoration & Construction*
Provo, UT (2019) / RetroPlate, RetroGuard / Brett Cline



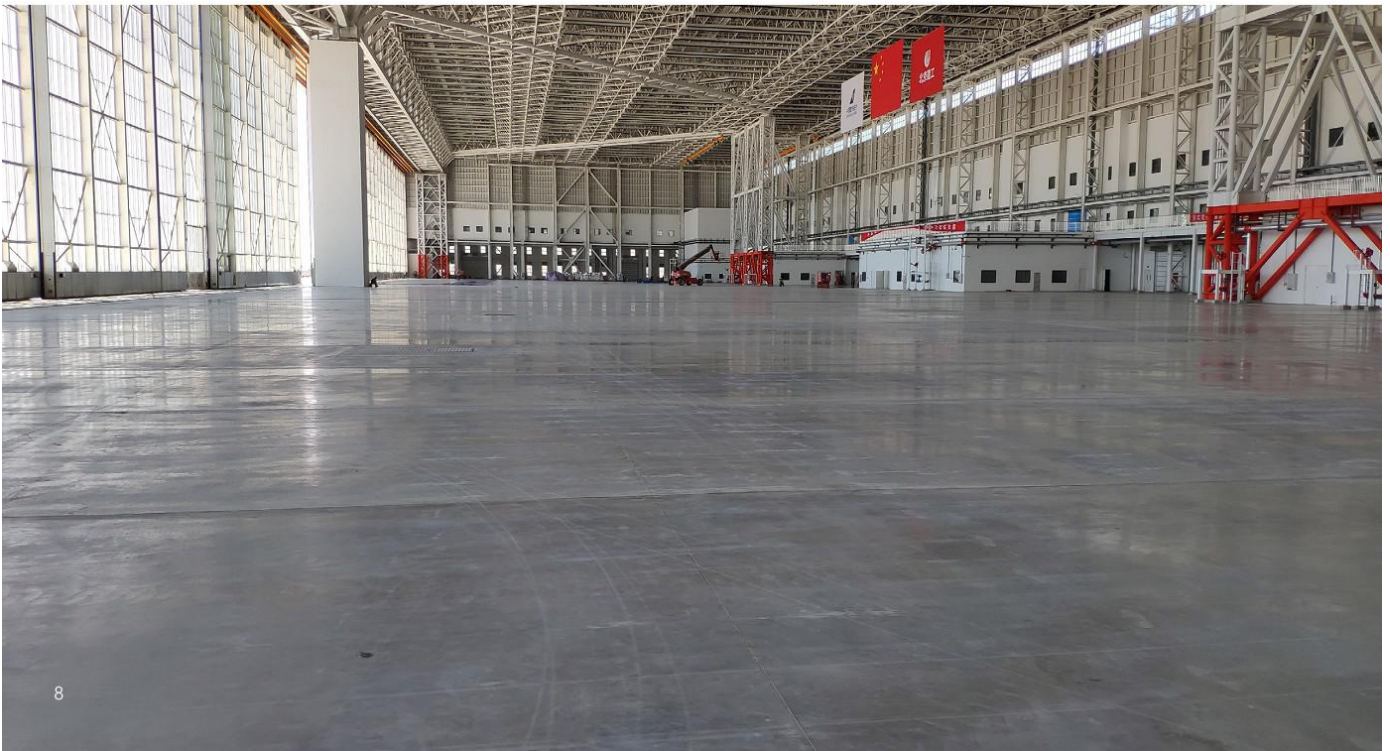




Beijing Daxing Int'l Airport

by **Jiangsu HuaCan NewGreen Materials Technology Co., Ltd**

Beijing, CHINA (2018) / Ashford Formula / Jiangsu HuaCan NewGreen Materials Technology, Co., Ltd





WestJet Hangar

by **Concrete Reflections, Inc.**

Calgary, AB, CANADA (2019) / CreteFill Pro 85, RetroPlate, RetroGuard, RetroPel / Vince Harker & Kyle Harker

Concrete Reflections, Inc. was tasked with polishing the new WestJet wide body hangar, built specifically for the Boeing 787 Dreamliner fleet.

From the Daily Hive News (April 25, 2019):

"WestJet officially unveiled its 125,000-sq-ft Dreamliner hangar at an event on Tuesday, April 24, showing the world (and the 1,500 WestJet employees in attendance) the structure that will be used to house and maintain its brand new 787-9 Dreamliner aircraft."

"This state-of-the-art facility provides the perfect environment for our highly skilled aviation maintenance engineering teams to continue to ensure the safety and comfort of our 25 million annual guests."

"The hangar will be where the 787-9 Dreamliners will be maintained, as it can hold up to 130 members of their technical operations teams at one time."



Photo Credit: Daily Hive News

Project Highlights

COMMERCIAL & RETAIL



Cub Foods

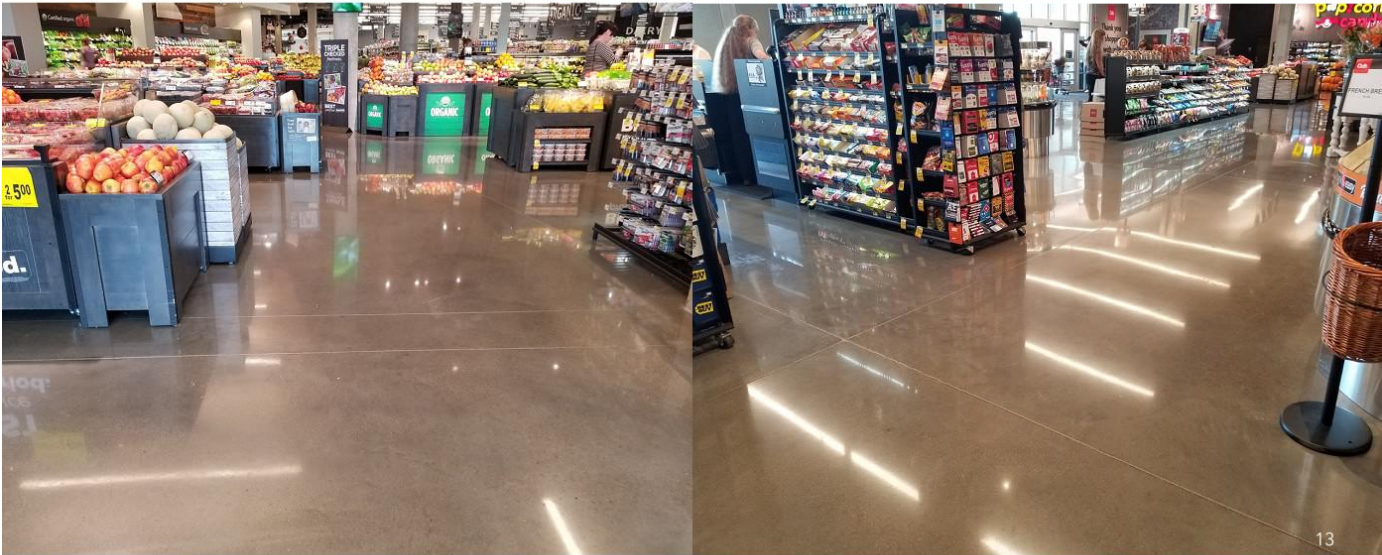
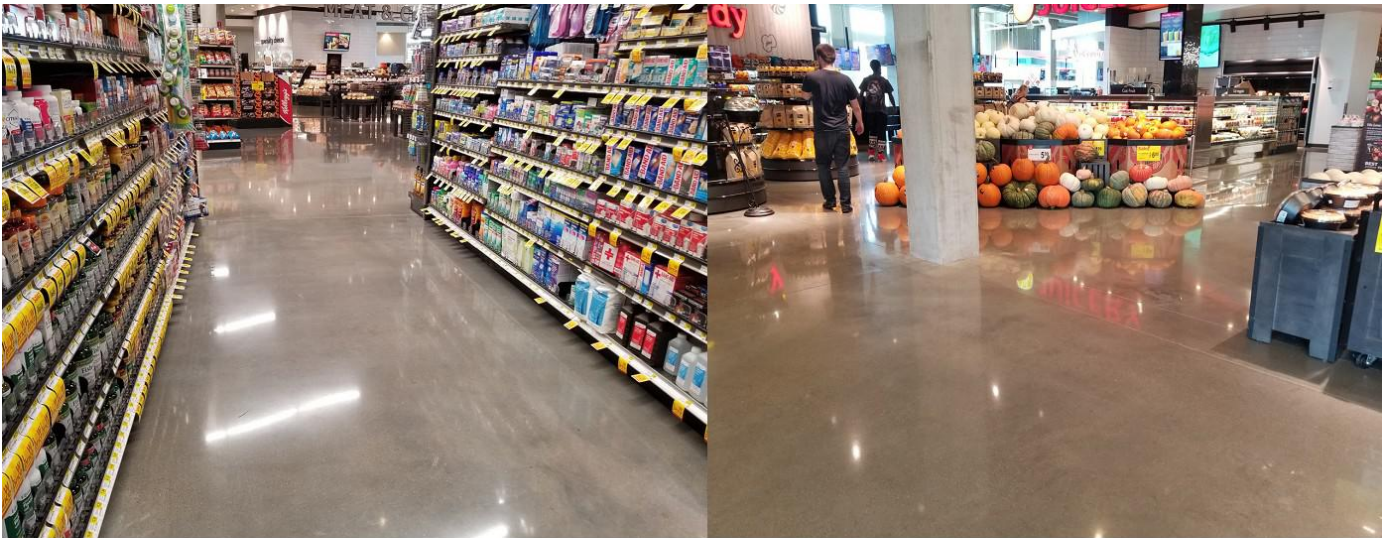
by ***Diamond Shine Concrete Polishing***
Minneapolis, MN (2019) / RetroPlate / Brian Boie

Rob Hamme of **Diamond Shine Concrete Polishing** and his crew worked the graveyard shift from February to April in order to complete this Cub Foods project. Doing so allowed them to avoid construction during the daytime hours.

Unfortunately the space had not yet been plumbed, so the Diamond Shine team had to run a hose up through a hole in the floor from the parking garage below. Crew members would have to walk up and down a few flights of stairs and through two keyed doors to turn the water on and off.

As the weather warmed, they discovered leaks in the roof that had not been active during the cold Minnesota winter. As a result, it was a struggle at times to keep the concrete dry during the final step of dry-grinding.

Even though the Diamond Shine Concrete Polishing team faced these challenges, they were able to overcome them. As a result, the first of its kind - small format/urban grocery store for Cub Foods - set the benchmark for future Cub Stores.



Shepherd Egg Farm

by **Dan Woodland**

Benjamin, UT (2019) / KickStart, CreteClean Plus, RetroPlate, RetroGuard, RetroPel / Brett Cline



Ace Hardware

by **National Concrete Polishing & Grinding, Inc.**
Struthers, OH (2019) / RetroPlate / John O'Keefe



14

Kroger

by **Prodigy Concrete Flooring Solutions**

Houston, TX (2019) / RetroPlate / Russ Bodnyk



Blackberrys Clothing

by **JBA Concrete Solutions Pvt Ltd**
Haryana, INDIA (2019) / RetroPlate / JBA India



15

Cole Haan

Tulalip, WA (2018) / RetroPlate / Ron Ogden



Plan-It Storage

by All American Concrete Polishing

Denton, TX (2019) / RetroPlate, RetroGuard / Rhonda Clinton & Cass Rochelle



16

Auto Repair Shop

by **DelRod Perfect Polish**

Garland, TX (2019) / RetroPlate / Rhonda Clinton & Cass Rochelle



Epoxy removal / Class B - fine aggregate exposure / Level 4 - 1500 grit polish.

Wal-Mart de Mexico y Centroamérica

by **Tec-Crete**

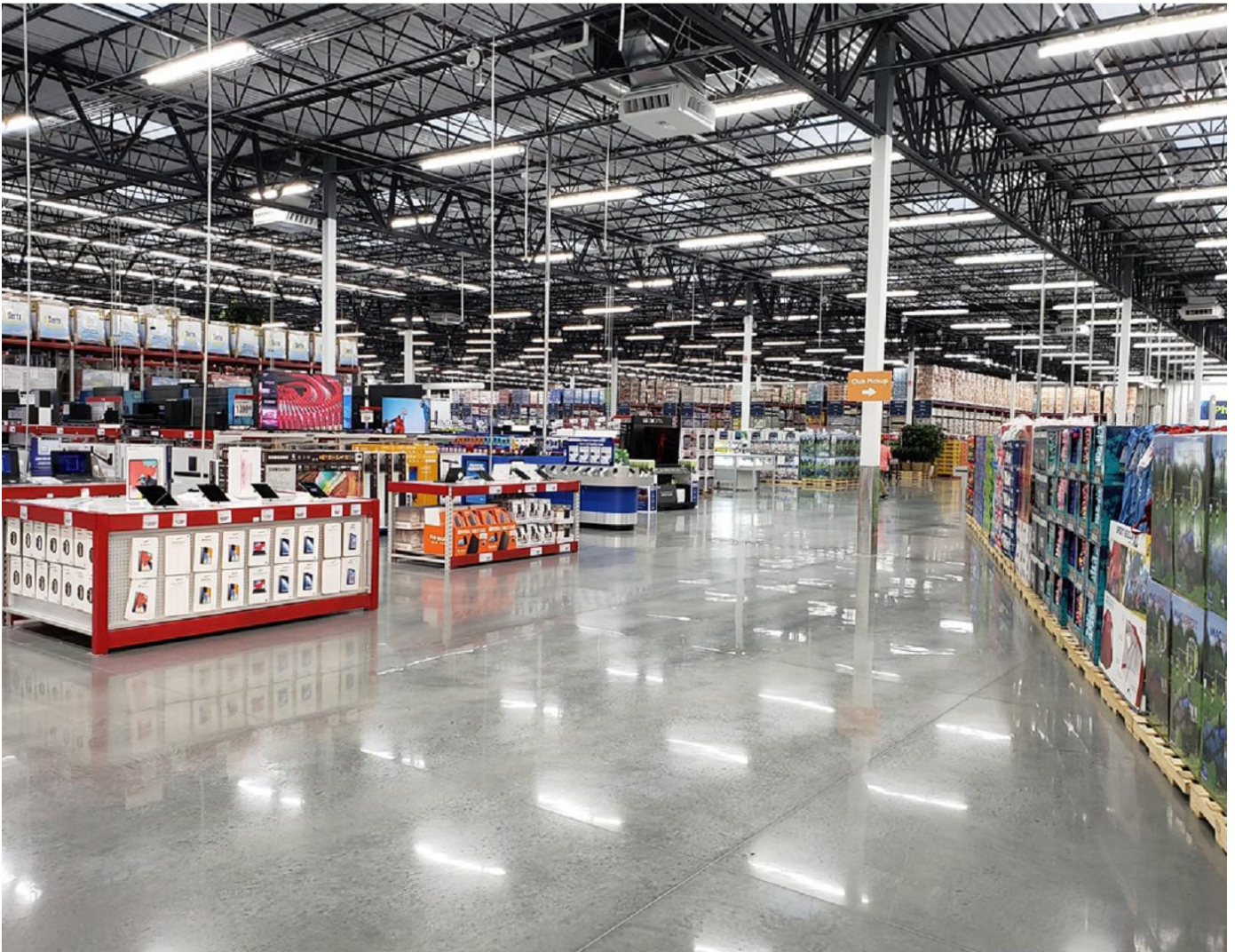
Guanajuato, MEXICO (2019) / Ashford Formula / Ashford Formula de Mexico

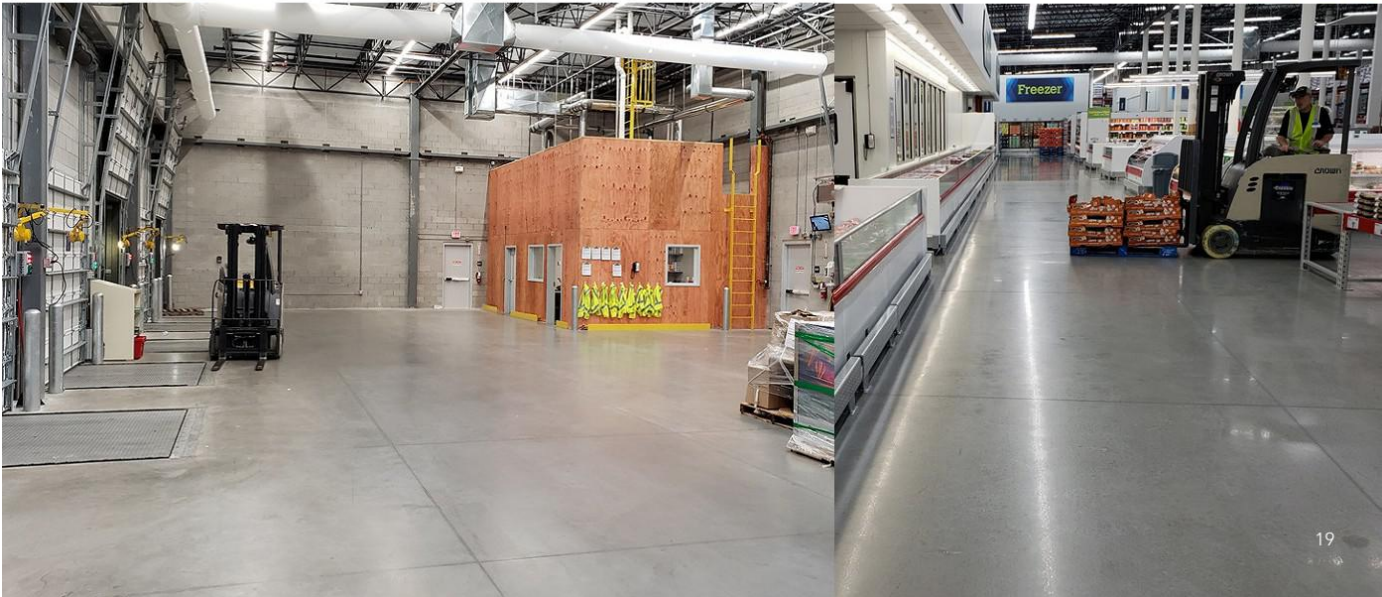
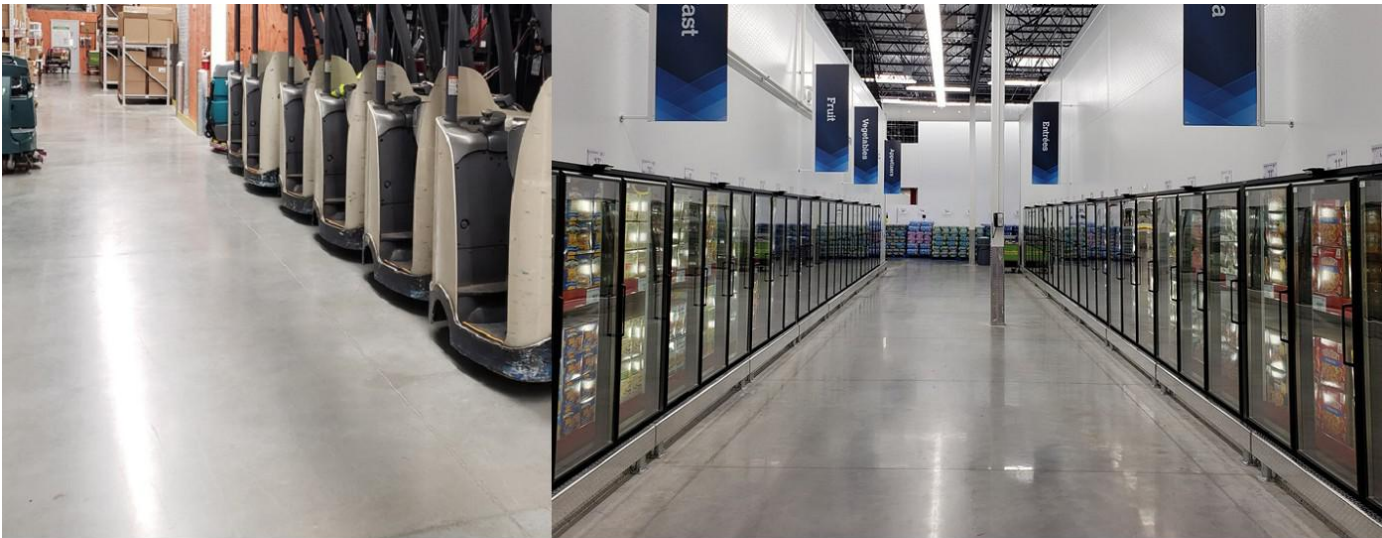


Sam's Club

by *American Concrete Coatings, Inc.*

Daytona Beach, FL (2019) / Ashford Formula / Lori Ossi & Jim Hargis







Finish Line

by *Polish Colorado*

Thornton, CO (2019) / RetroPlate / Bob Cuje



Cole Haan

by **ReflecCrete**

Clarksburg, MD (2019) / RetroPlate / Todd Guntner & Travis Gold



Beautiful work by the ReflecCrete crew. Project completed in 1.5 days.

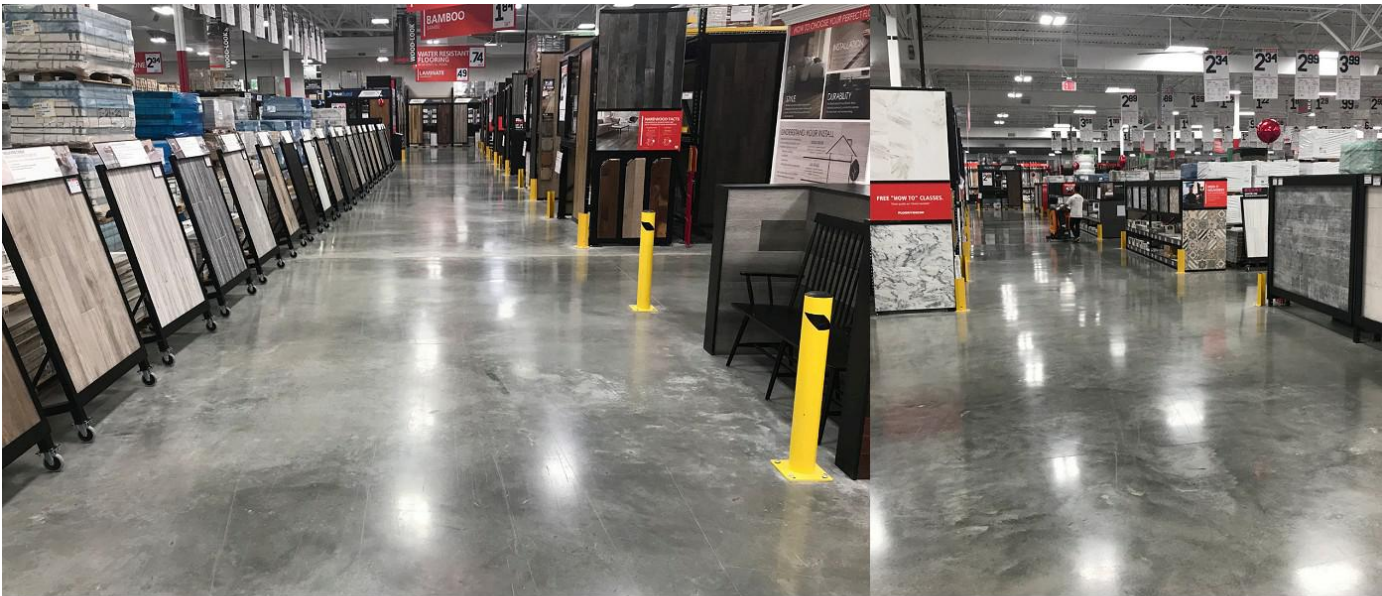
Komeri Hardware Store

by **Cosmo Trade & Service**

Shiroishi, JAPAN (2019) / Ashford Formula / Cosmo Trade & Service

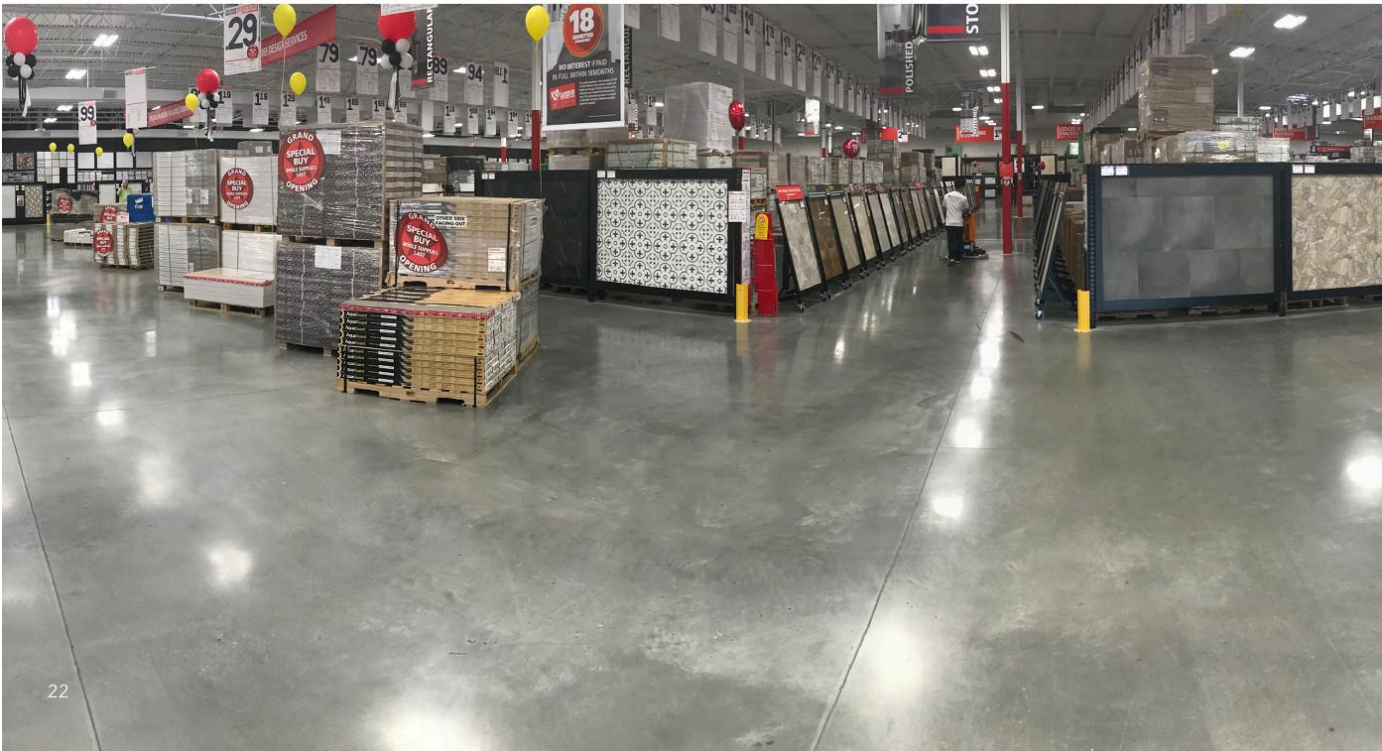
The application of Ashford Formula on this Komeri hardware store is a potential golden opportunity and could lead to more specifications in future Komeri store projects. Komeri is focused on the low-maintenance and proven performance qualities of the Ashford Formula.

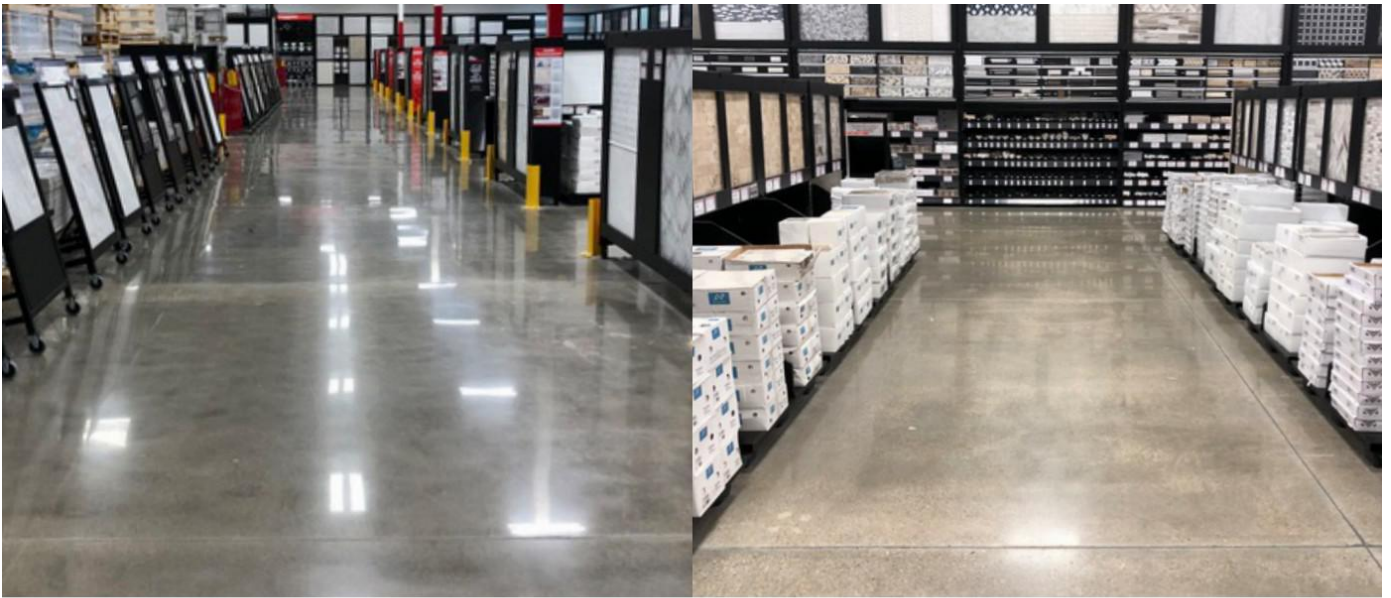




Floor & Decor

by *Surfacing Solutions, Inc.*
Burlingame, CA (2019) / RetroPlate / Chris Burns

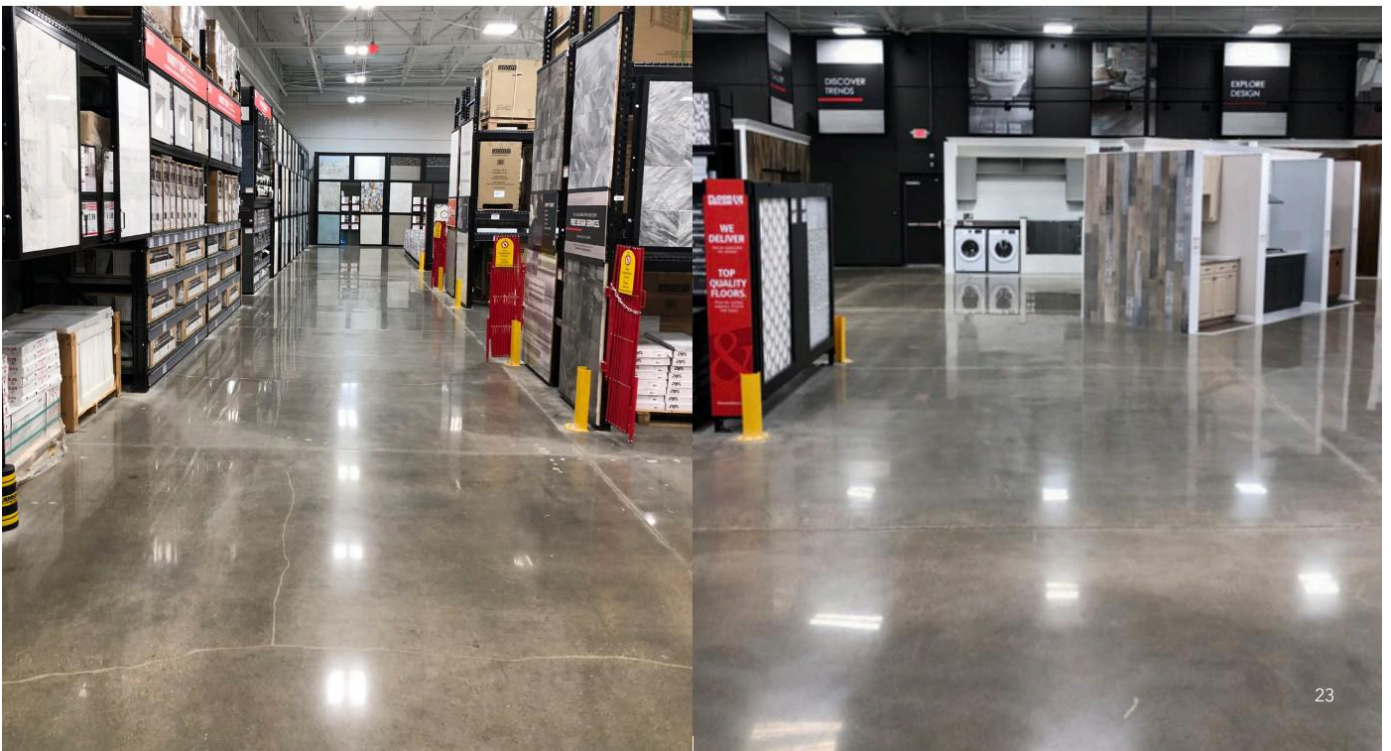




Floor & Decor

by *Final Touch, Inc.*

Columbus, OH (2019) / RetroPlate / John O'Keefe





Goodwill

by *GCP Concrete Polishing & Restoration, LLC*

Austin, TX (2019) / RetroPlate / Russ Bodnyk





Project Highlights

**OFFICE
SPACE**





[Click for magazine feature.](#)

Hildene Capital Management Offices

by **Everlast Industrial Flooring, LLC**
Stamford, CT (2019) / RetroPlate / Ed Leach

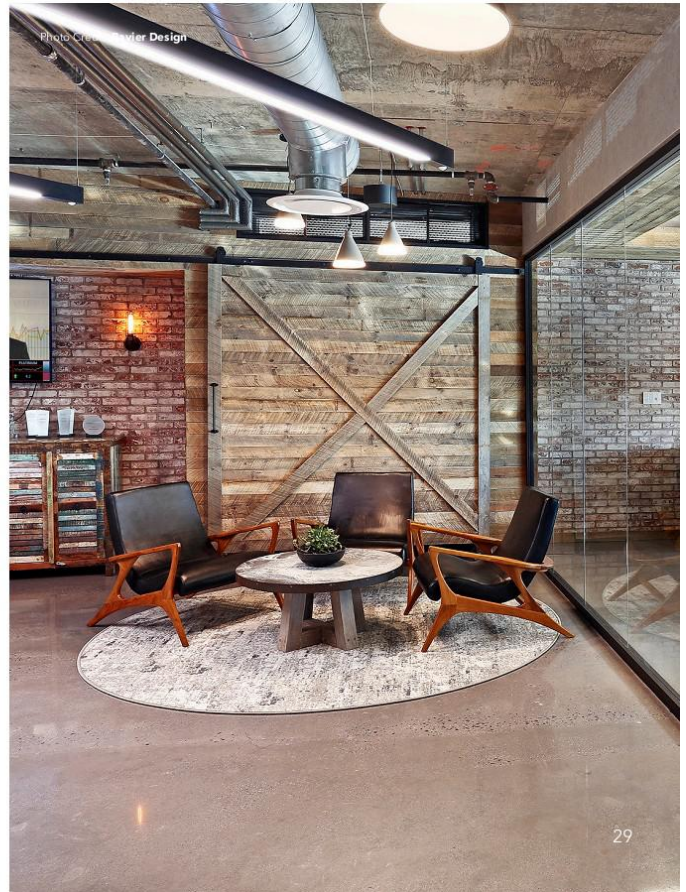
Shannon Psaras and her team at **Everlast Industrial Flooring, LLC** faced several challenges when they were awarded this project for the Hildene Capital Management Offices in Stamford, CT.

The original slab was over 30 years old, and as expected, numerous cracks and holes had to be filled. The architect, however, was very adamant about a flawless floor finish.

With experience and expertise on their side, the Everlast crew was able to blend all the cracks, holes and blemishes on the existing concrete slab showing little to no patchwork on the finished floor.

But that wasn't it. The crew faced another challenge when they had to remove a 1/2-inch thick underlayment that spanned 7,500 ft². To top it off, while removing the underlayment they also encountered tile beneath it. The tile had to be carefully removed in order to keep the patchwork to a minimum, keeping in mind the architect's mandate for a flawless floor finish.

Shannon and her crew accomplished this goal flawlessly and the end result was pure perfection. According to Shannon, "if you want to know our secret, we always take our time."



29

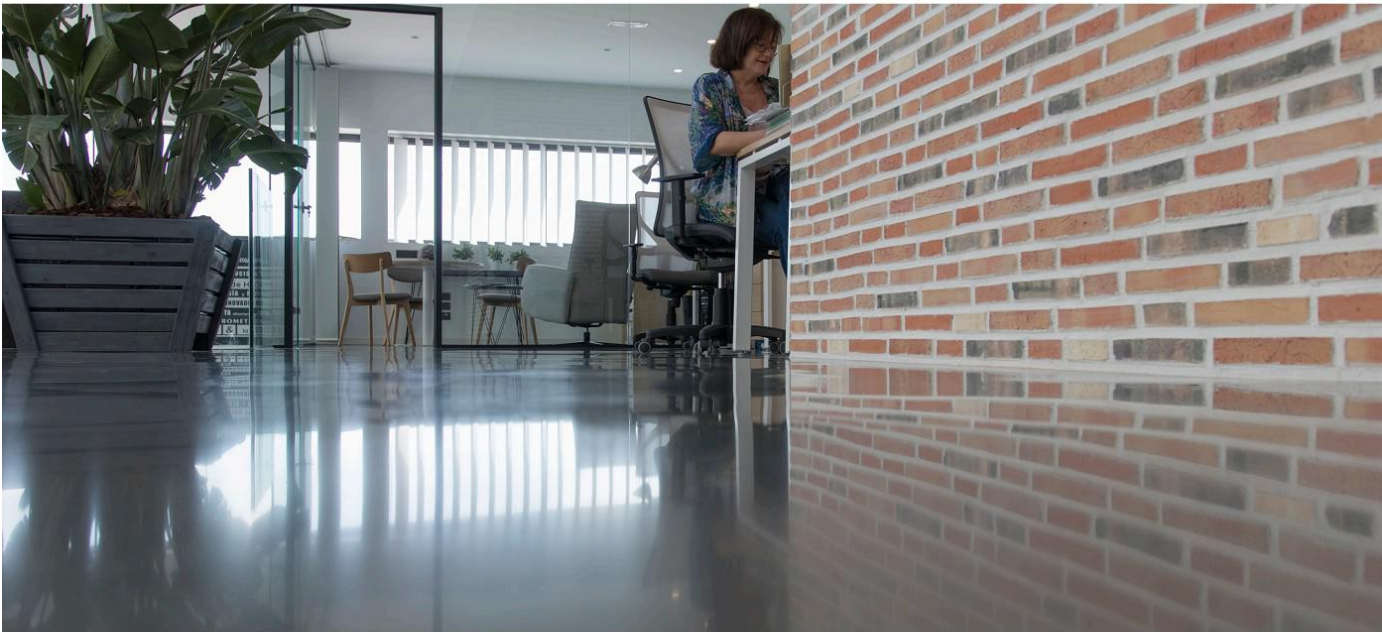
Durotec Offices

by *Durotec Glasstone, SL*

Antas, Almeria, SPAIN (2019) / Ashford Formula, RetroPlate / RetroPlate Europe



[Click for magazine feature.](#)





MDC Corporate Center

by **Tradetek Resources, Inc.**

Taguig, PHILIPPINES (2019) / RetroPlate / Tradetek Resources, Inc.

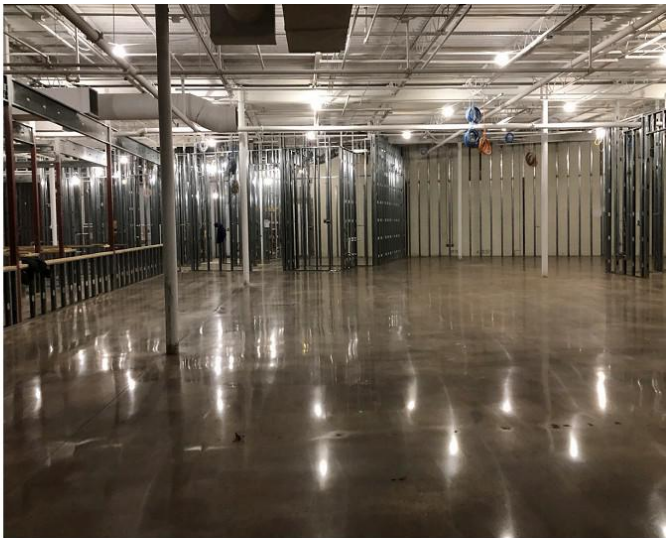
Makati Development Corporation (MDC) is one of the largest construction companies in the Philippines. They were seeking a floor finish for their new corporate center that would achieve two goals. First, they wanted a floor finish that would be extremely durable, easy to maintain and have the lowest possible life cycle cost. Second, they were looking for a floor finish that would reflect the nature of their business, something natural and sustainable, not synthetic looking and temporary.

Through the architects of the project, Lor Calma & Partners, the RetroPlate Concrete Polishing System was introduced and presented to MDC. All of the necessary technical literature, test results and project references

were submitted for review and an on-site mock-up was performed to further reinforce the benefits of the system.

After being given the green light to proceed with the RetroPlate application, the Tradetek Resources, Inc. team went ahead and started working on the lower floors. Some of the upper floors, which were originally specified to receive a tile finish, were changed to RetroPlate after the owners saw the results of the polished concrete floors.

The building maintenance team was later trained on how to properly maintain the center's new RetroPlate polished concrete floors and were surprised at how easy and cost effective the recommended cleaning process is.



18th & Halstead

by **Bedrock Concrete Arts**

Chicago, IL (2019) / Bob Donahue & Jennifer Burke

The construction-market craze in Chicago is all about rehabbing turn-of-the century buildings once used for factories, meat packing plants and manufacturing facilities into highly sought-after loft apartments, offices, and retail space.

Villa Capital Partners, LLC is a shining example of this process and vision with its rehab of a 1903 building in Chicago's Pilsen Neighborhood.

Pilsen was made Timeout.com's Top 10 List of World's Coolest Neighborhoods with its thriving street art community and gallery scene (wgntv.com). This "up & coming" neighborhood was a perfect location for much needed office and retail space in the area.

From the very beginning, John Pagone, Principal at Villa

Capital Partners was intrigued by the look polished concrete offered to old spaces - visually tying together spaces with timber and beam construction, original exposed brick walls, large black framed picture windows, exposed ceilings, and rustic-chic light fixtures.

The challenge of this project was to keep the historic charm of the space that had once been home to a chemical factory, hardware store and paint manufacturer, while making it enticing to the artists and millennials that are drawn to this area.

After researching the installed and lifetime maintenance costs of other flooring types, such as wood and tile, Pagone was sold on RetroPlate polished concrete. As Pagone explained "The resiliency and cost of polished concrete made all the sense in the world".





“The challenge of this project was to keep the historic charm of the space that had once been home to a chemical factory, hardware store and paint manufacturer, while making it enticing to the artists and millennials that are drawn to this area.”

Pagone connected with longtime RetroPlate applicator Vince Schrementi of **Bedrock Concrete Arts** to collaborate on this project. The unique concrete features in the interior of Schrementi's home have been featured by media outlets over the years. This, coupled with his reputation of expert workmanship has solidified his name as a decorative concrete guru in the city and suburbs of Chicago.

Schrementi worked closely with Pagone and the concrete mix company, Ozinga, to perfect a mix design for the 2" pour on which Schrementi later performed a RetroPlate diamond grind and polish to achieve a salt and pepper aggregate finish throughout this 44,000 ft² building. The before and after pictures of this project tell the rest of the story.





Kraus-Anderson Construction Headquarters

by *Gopher State Cleaning, Inc.*
Minneapolis, MN (2018) / RetroPlate / Brian Boie

Russ Wahlberg of **Gopher State Cleaning, Inc.** knew that this particular project required nothing short of perfection.

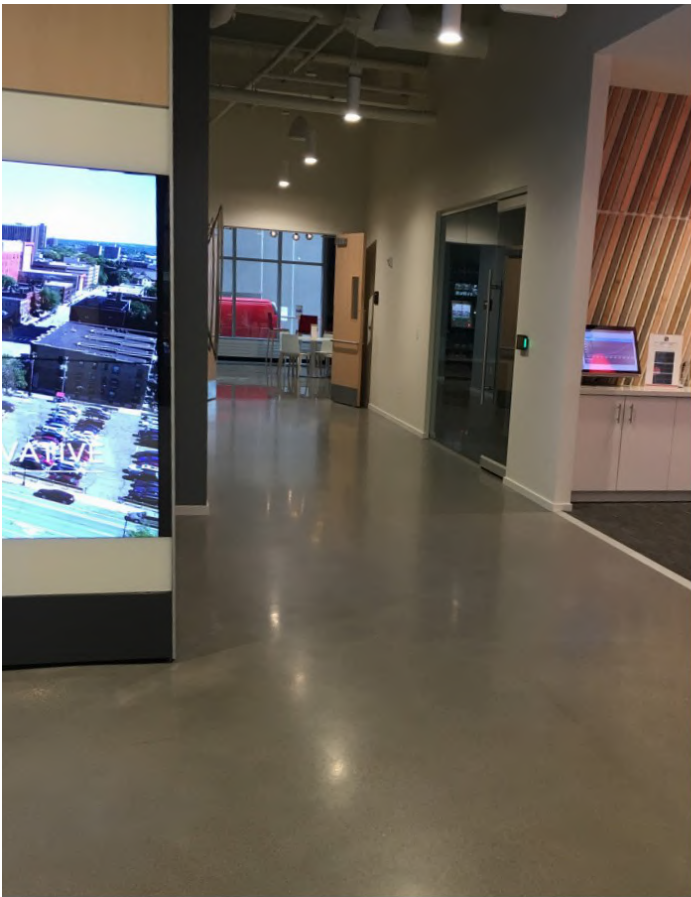
Kraus-Anderson Construction is consistently ranked by Engineering News Record as one of the top 20 construction firms in the Midwest, and are also very good customers of Gopher State Cleaning. When it came time to polish the exposed concrete floors in their new headquarters in Minneapolis, MN, Russ and his team were determined to deliver their best work.

The specifications for the offices required medium aggregate exposure with a level 2 (satin) finish, and was accomplished with a traditional wet grind and polish using the RetroPlate system.

The specifications for the kitchen area required medium aggregate exposure with a level 4 (highly polished) finish.

Even though the concrete was poured in late fall with only temporary heating, everything turned out well and Kraus Anderson Construction was extremely happy with their beautiful, new RetroPlate polished concrete floors.





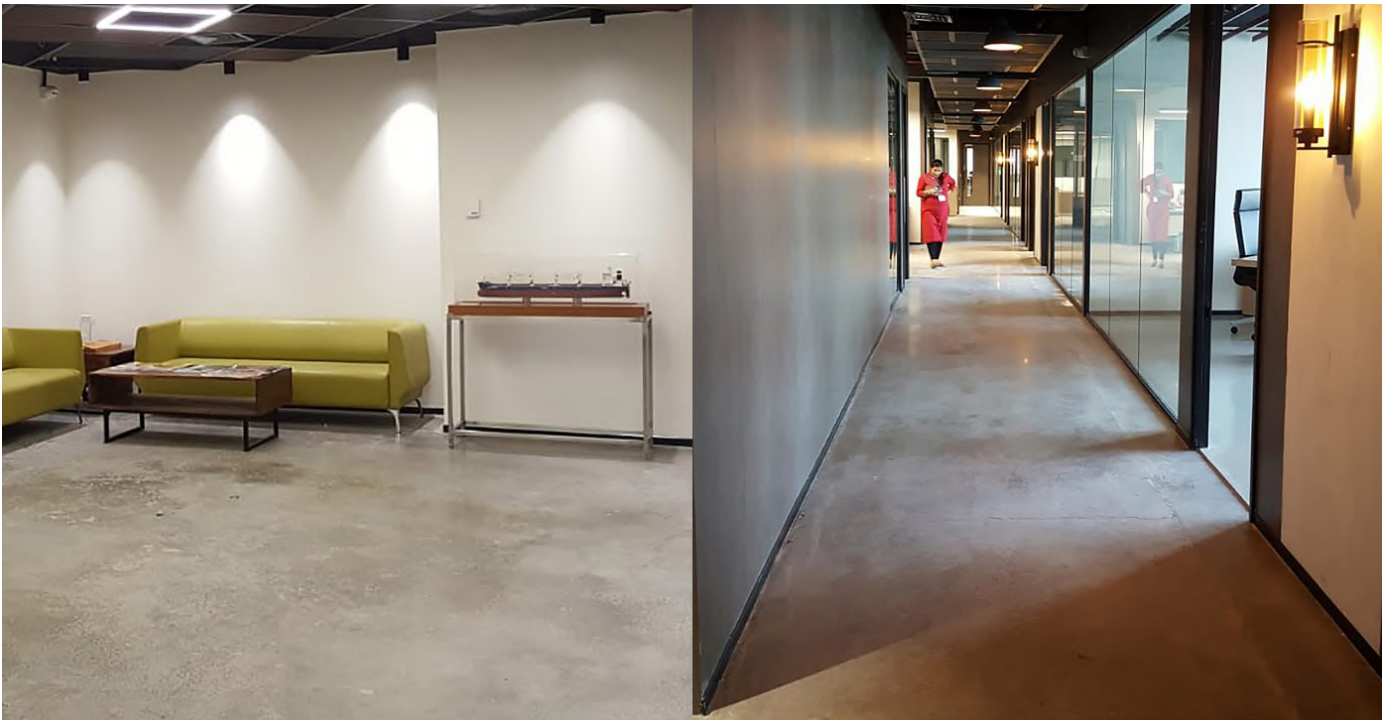


Parsons

Call Center

by CDC Restoration & Construction
Salt Lake City, UT (2019) / RetroPlate, RetroGuard / Brett Cline





Transworld Group

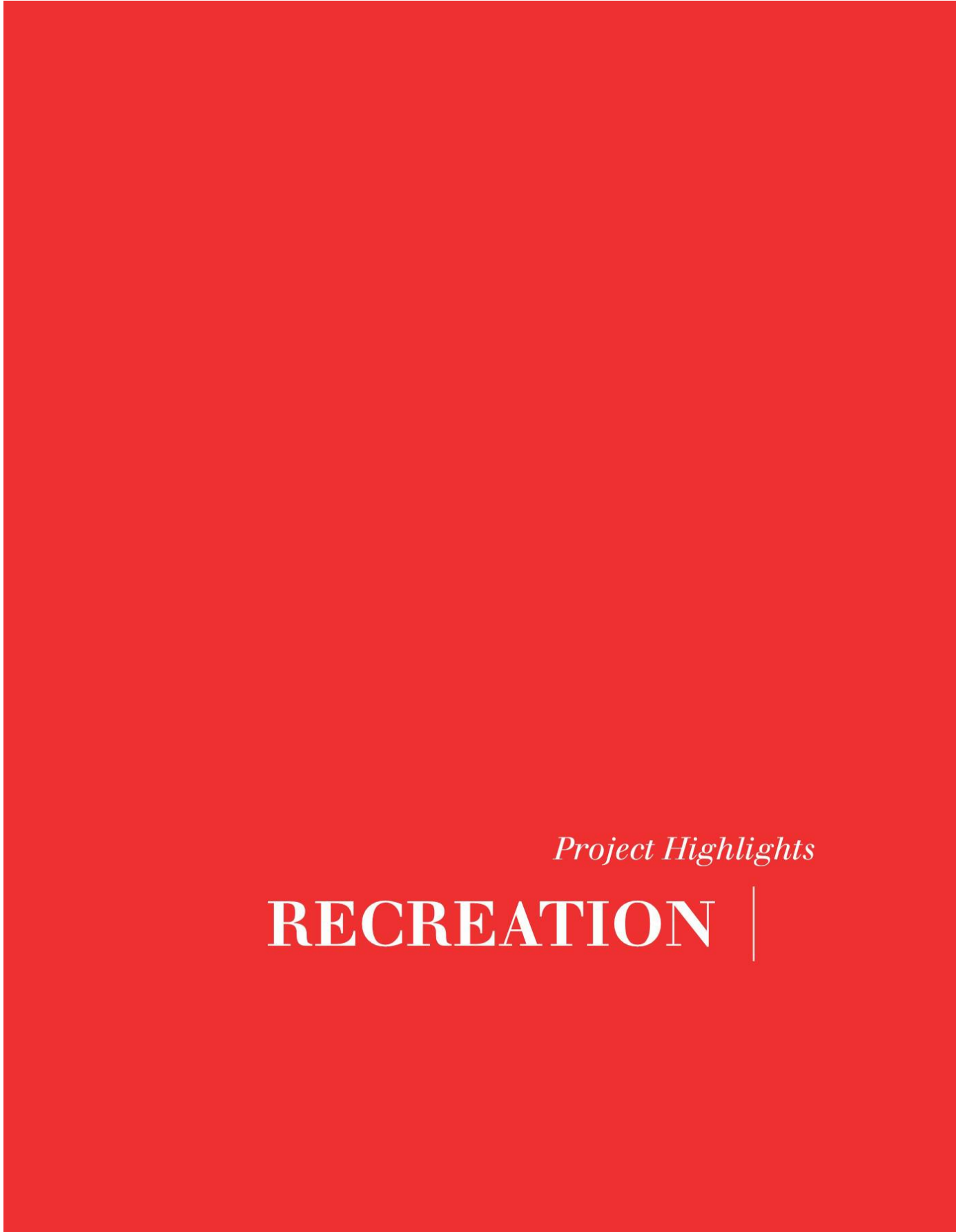
by JBA Concrete Solutions Pvt Ltd
Mumbai, INDIA (2019) / Ashford Formula / JBA India



Richardson Public Safety Building

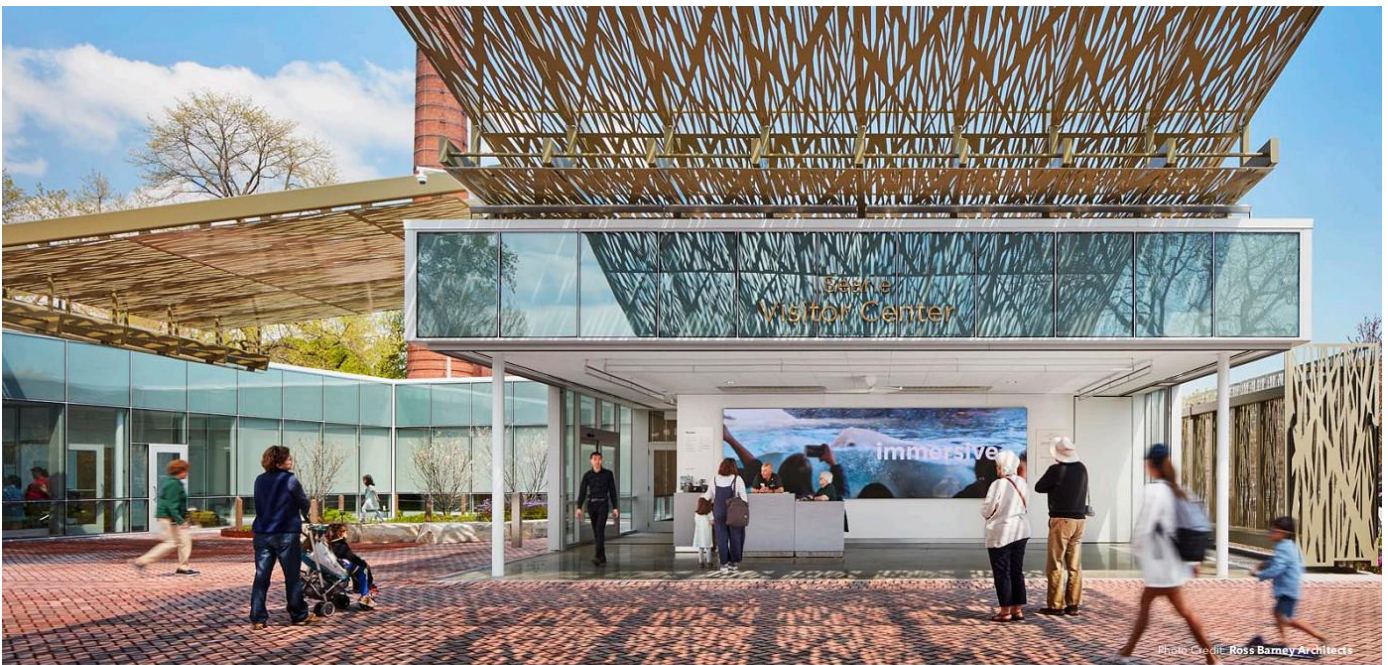
by *Johnson & Sons Industrial and Commercial Flooring*
Richardson, TX (2019) / RetroPlate, RetroGuard / Rhonda Clinton & Cass Rochelle





Project Highlights

RECREATION |



Lincoln Park Zoo

by **Artlow Systems**

Chicago, IL (2019) / RetroPlate / Bob Donahue & Jennifer Burke

Lincoln Park Zoo, located in Chicago's historic Lincoln Park District, was founded in 1868* and is one of the only remaining free-admission zoos in North America. The not-for-profit zoo welcomes its visitors with the newly-opened Searle Visitors Center which includes guest and information services, a member's lounge, as well as office space.

This high-profile project was designed by local Chicago architectural firm, Ross Barney Architects, who specified "by design" the RetroPlate System for polishing the concrete floors of this environmentally conscious facility.

The Lincoln Park Zoo is located on 49 acres of Chicago's Lakefront and is open to visitors 365 days a year - through the blazing heat and humidity of the Windy City's summers and the Lakefront's blustery below-freezing temperatures and winter blizzards.

With 3.5 million visitors annually, and the harsh outdoor conditions that inevitably creep their way indoors, polished concrete is an ideal solution for a floor that must withstand many decades of wear. The brightly polished concrete especially stands out in the summer months

when the information center's retracting walls open to the zoo grounds.

The *Pride in Construction Awards* which recognizes excellence in Union Construction in Northeastern Illinois, recognized the Searle Visitor Center project in 2019.** RetroPlate Certified Installer and Proud Union Member, **Artlow Systems** of Carol Stream, IL installed the polished concrete on this 9,500 square feet, \$9.3 million project, with a cream finish and 800-grit gloss. The expertise of the installer is paramount to the outcome of any polished concrete floor.

Bob Donahue and Jennifer Burke, Curecrete representatives for the Chicagoland area, understand the importance of good relationships and installer expertise. "The relationship we have built with the highly-experienced and reputable Artlow Systems is invaluable. The people at Artlow are always willing to go the extra mile to make sure the job is done right and that the RetroPlate polished concrete client is satisfied."

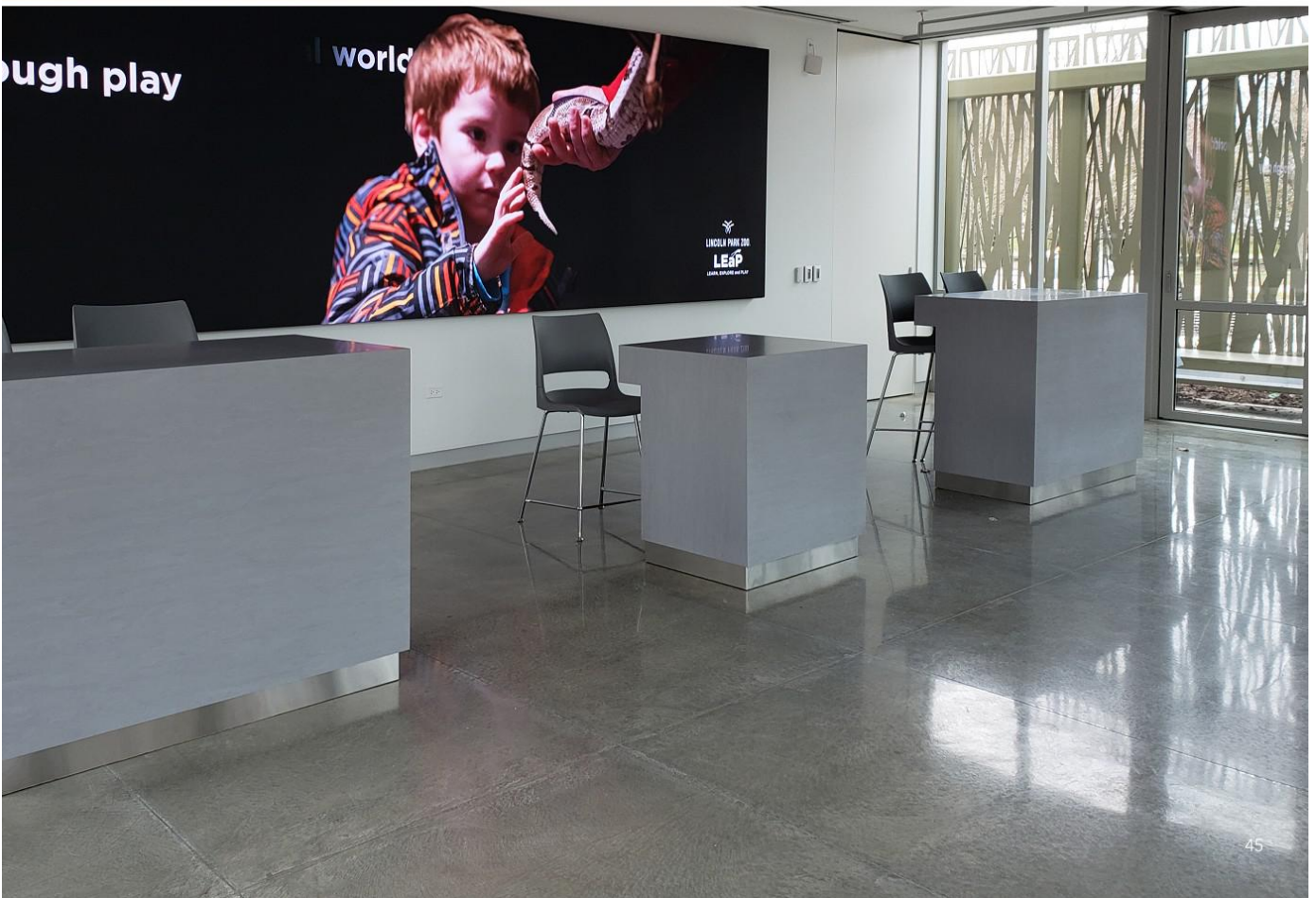
*Statistics & figures from lpzoo.org

**<http://www.cisco.org/projects-of-the-year/>



“The people at Artlow are always willing to go the extra mile to make sure the job is done right and that the RetroPlate polished concrete client is satisfied.”

Jennifer Burke



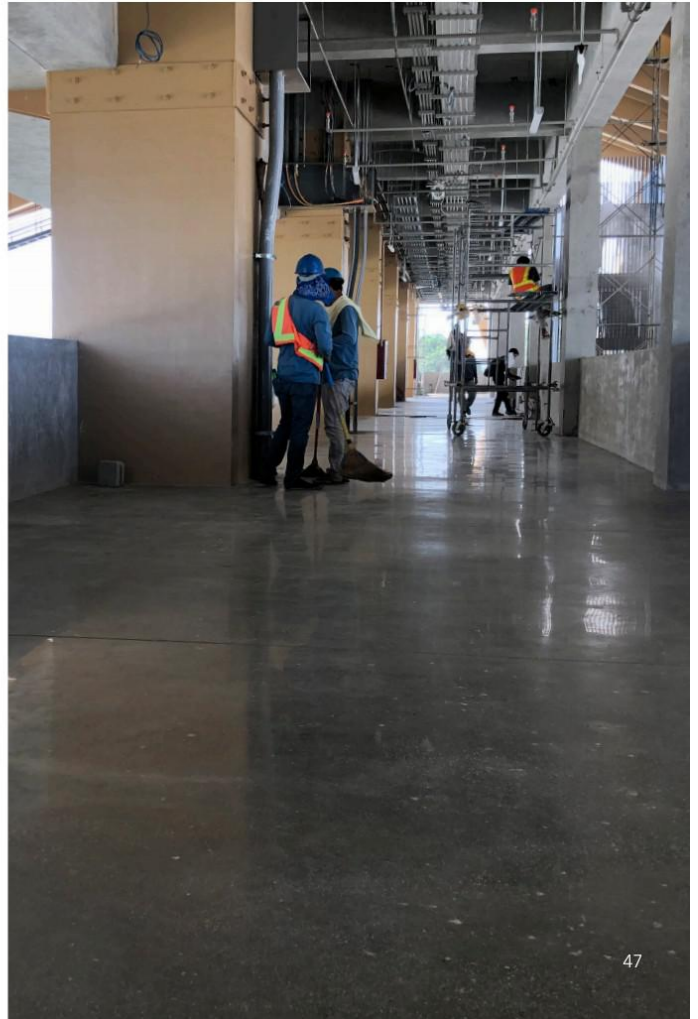
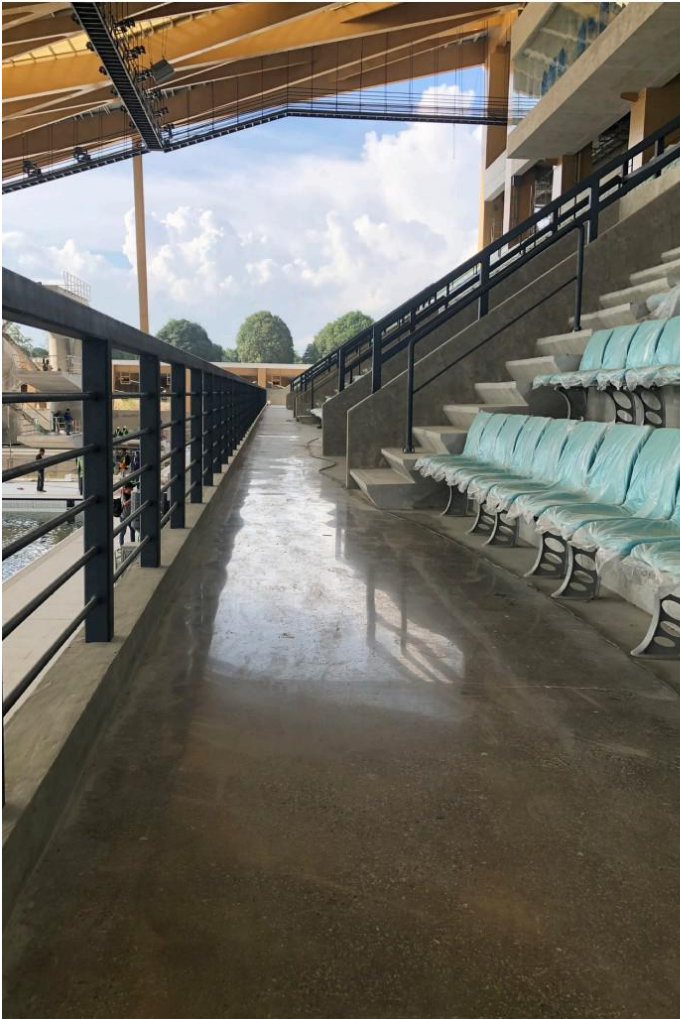
45



New Clark City Athletics Stadium & Aquatics Center

by **Transcend Polished Asia, Inc.**

New Clark City, PHILIPPINES (2019) / RetroPlate / Tradetek Resources, Inc.





[Click for magazine feature.](#)

Port Kennedy Skatepark

by **Advantesting Civil Engineers**

Rockingham, WA, AUSTRALIA (2019) / Ashford Formula, RetroPlate / RetroPlate Australia

****This is an update to the same project showcased in the 2019 Curecrete Project Highlights Book.***

Advantesting Civil Engineering constructed a skatepark for the City of Rockingham which was completed in August 2019. The Skatepark, which was the largest park to date, was designed by skatepark design consultants Newline Skateparks and Skate Sculpture.

The RetroPlate densifier was applied to the vertical surfaces, tops of ramps, and quarter pipes where coping was not detailed. This detail is called noping. After the RetroPlate densifier was applied, all the nopings were

polished with resin pads attached to 125mm battery powered grinders. This not only polished the nopings to allow skaters to slide along these sections, but ensured the concrete surface was hard and would resist chipping from the metal trucks of the skateboards.

According to Curecrete's distributor, Callum O'Neill with RetroPlate Australia, the "skate park was treated with Ashford Formula to the flat surfaces and RetroPlate on the ramped areas and edges to provide an extra hard surface. Ashford Formula certainly helped here. RetroPlate performed amazingly on the edges to protect from wear from the skateboards and scooters," he said.





Peterson Automotive
Museum

by Mark Beamish Waterproofing, Inc.
Los Angeles, CA (2015) / RetroPlate / David Dusseau & Mike Pitcher



Cuartel de Artillería

by *Durotec Glasstone, SL*
Murcia, SPAIN (2019) / RetroPlate / RetroPlate Europe





[Click for magazine feature.](#)

The REACH at the Kennedy Center

by *Cuviello Concrete & Terrazzo Polishing*
 Washington, DC (2019) / RetroPlate / Todd Guntner & Travis Gold

The REACH at the Kennedy Center opened September 7, 2019 with a vision, "If art is to nourish the roots of our culture, society must set the artist free to follow his vision wherever it takes him."—John F. Kennedy

John F. Kennedy's vision was to set the artist free. Free to reach beyond hallowed halls and sacred walls into creative open spaces where audiences can reach back and connect with the art and the artist who created it.

The REACH is a living theater where diverse art forms collide to break down the boundaries between audience and art. It is an immersive learning center, a public incubator, and a set of dynamic, collaborative spaces where art happens so close audiences can reach out and touch it.

Envisioned as a complement to, and extension of, the Kennedy Center's mission, the REACH is an open

stage for differing ideas and divergent cultures, delivering on a vision for what a 21st century arts center should be—inclusive, accessible, and interactive.

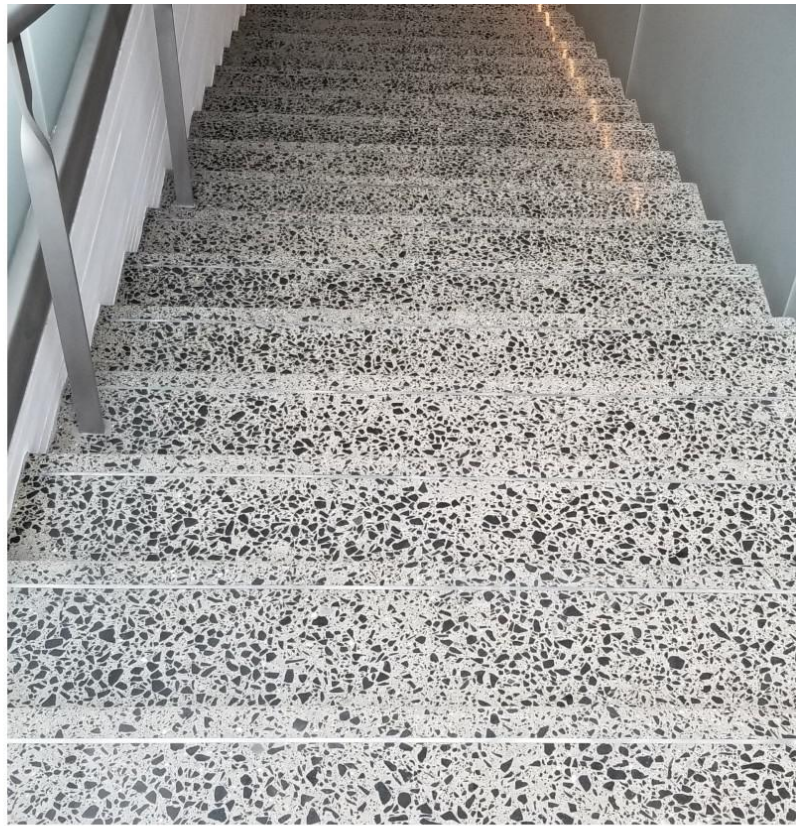
Cuviello Concrete worked with world renowned architects Steven Holl and Chris McVoy of **Steven Holl Architects** and the architect of record **BNIM** for two years during design and with **Whiting Turner Construction** for one year installing the *Green Endurance Architectural Polished Concrete System*.

Green Endurance takes the approach of materials science and engineering. Starting with the formation of raw materials into a solid concrete mass and altering the surface with chemistry and mechanics to change its performance and appearance properties.

Green Endurance is unique to the concrete polishing industry by going beyond the typical planning and

"If art is to nourish the roots of our culture, society must set the artist free to follow his vision wherever it takes him."

John F. Kennedy



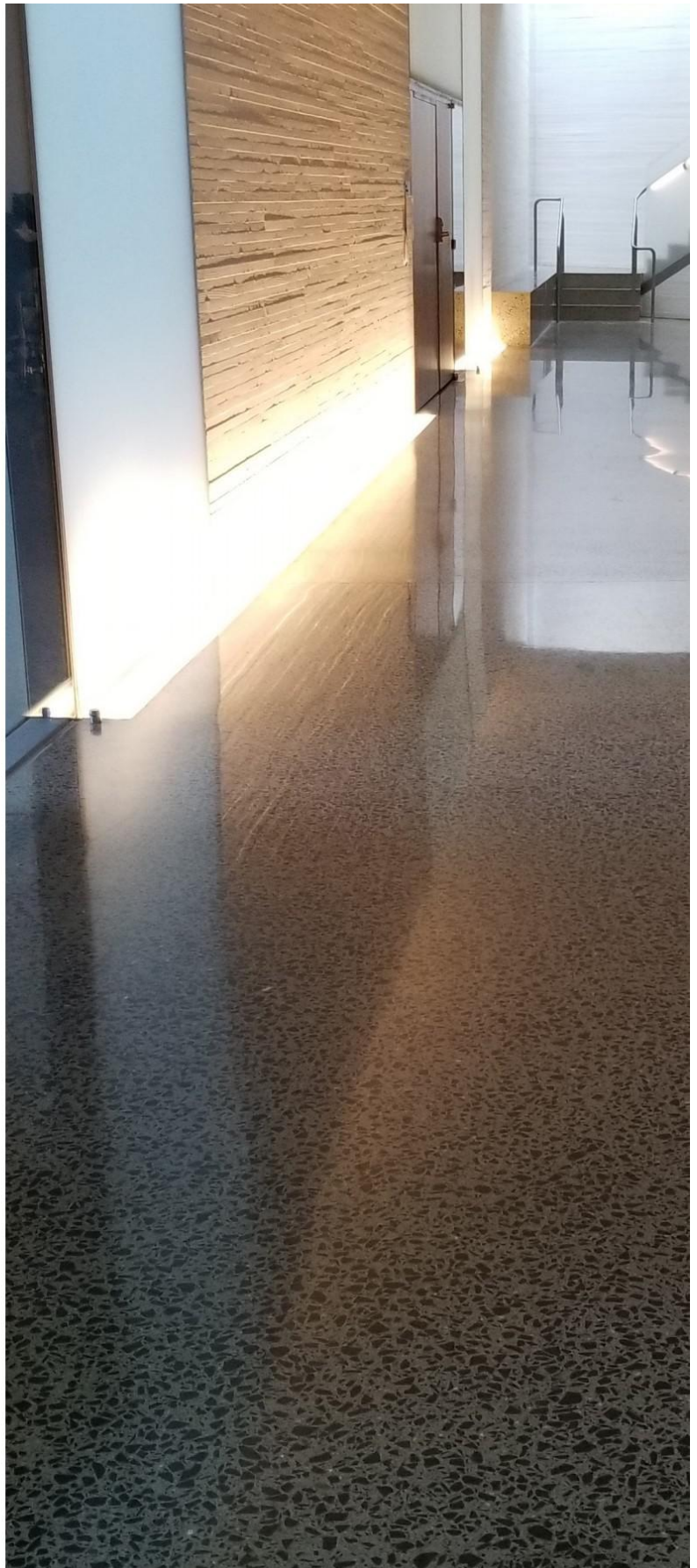
design components of construction. This starts during the conceptual stage of design before general contractors and construction managers are involved. Green Endurance is engineered based on the facilities use, the amount of traffic, type of traffic and aesthetic preferences. This information allows Green Endurance to take a material science and engineered approach in producing the concrete substrate and customizing the polishing process to deliver the required performance and aesthetics. The Green Endurance system allows an architect to specify any manufacturer's densifier, joint fill, pin hole grout, penetrating protectant, etc. within the Green Endurance engineered system.

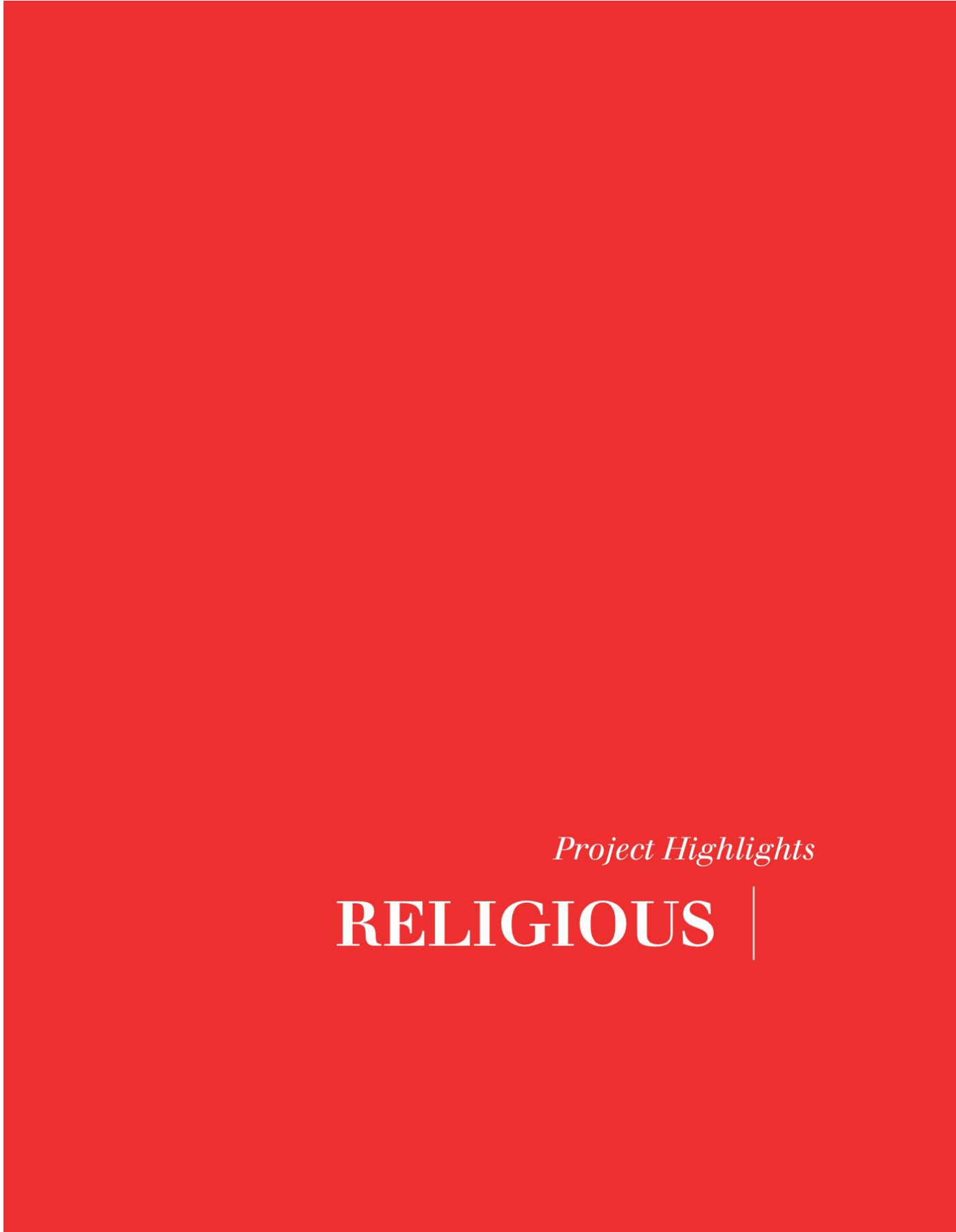
It is very exciting to be part of a project of this notoriety and caliber. The job did come with many challenges but none greater than the challenge of producing a high-end finish with a 20 year life cycle under the tight time constraints of today's construction.

Other time consuming challenges Cuvillo Concrete faced were cutting the 10,000 PSI Green Endurance engineered substrate, perfectly color matching detailed filling and patching around floor diffusers, slab edges and hydraulic glass door floor hinges to provide a clean detailed finish, seamlessly installing 1/4" X 3/8" zinc strips in 167 stair nosings and stenciling aggregate where needed to provide a perfectly consistent exposed aggregate appearance.

PROJECT DETAILS

- *Green Endurance Architectural Polished Concrete System*
- *CPC Class 3 Aggregate Exposure*
- *CPC Level 3 Polished Appearance*
- *Floor 13,782 ft²*
- *Edges 2,200 ft²*
- *Stairs and Risers 1,810 ft²*
- *167 Stair Nosings of Various Widths*
- *Benches 274 ft²*
- *Zinc Step Nosing Installation 847 LF*





Project Highlights

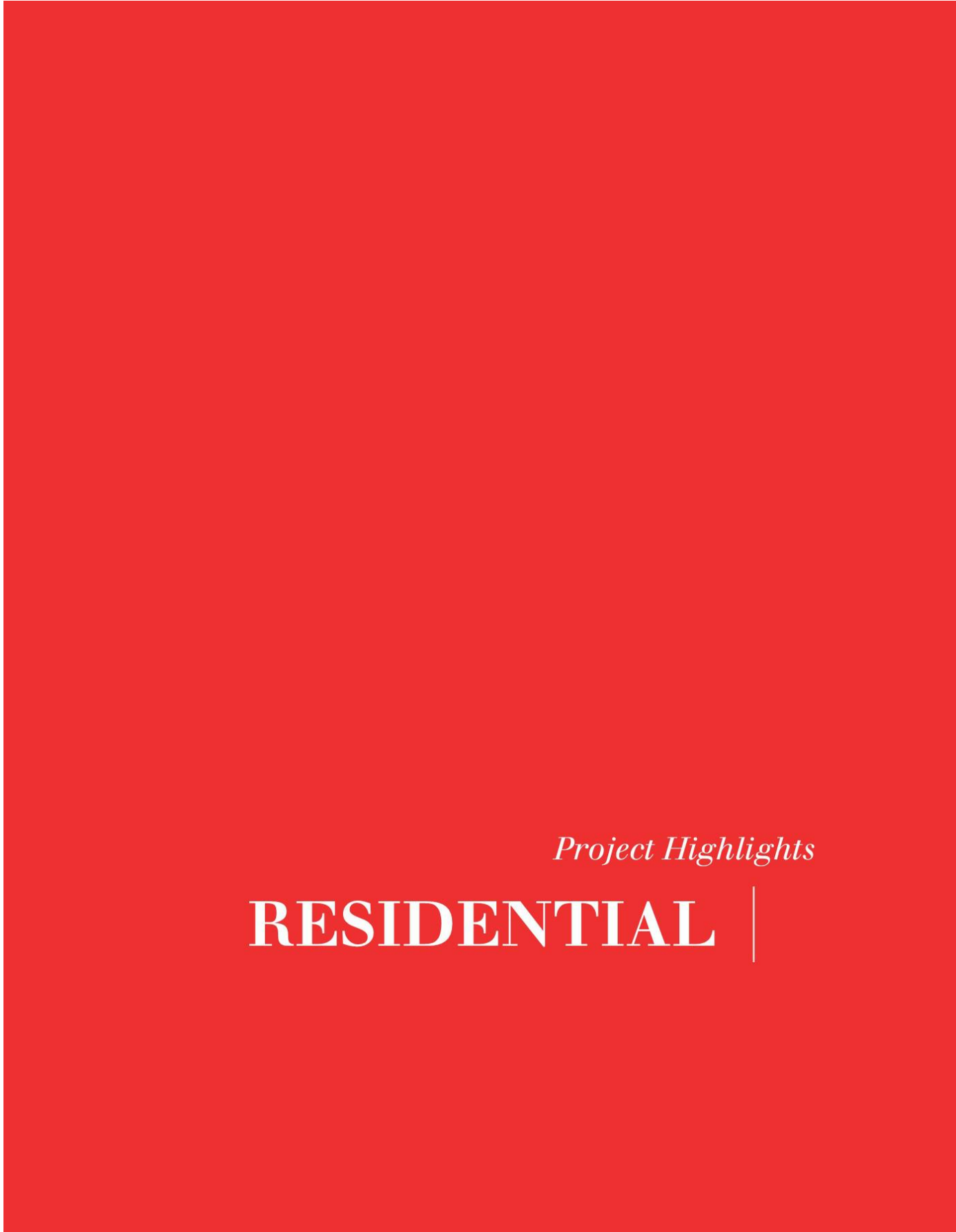
RELIGIOUS |

Saturn Road

Church of Christ

by ***DelRod Concrete Polish, Inc.***
Garland, TX (2019) / RetroPlate / Rhonda Clinton & Cass Rochelle





Project Highlights

RESIDENTIAL |



Dallas
Residence

by *DelRod Perfect Polish*
Dallas, TX (2019) / RetroPlate, RetroGuard / Rhonda Clinton



[Click for magazine feature.](#)



Project Highlights

SCHOOLS & UNIVERSITIES

JM Tawes Tech School

by **Master Applications, Inc.**

Westover, MD (2019) / Ashford Formula, CreteFill, RetroPlate, RetroGuard, RetroPel / Todd Guntner & Travis Gold

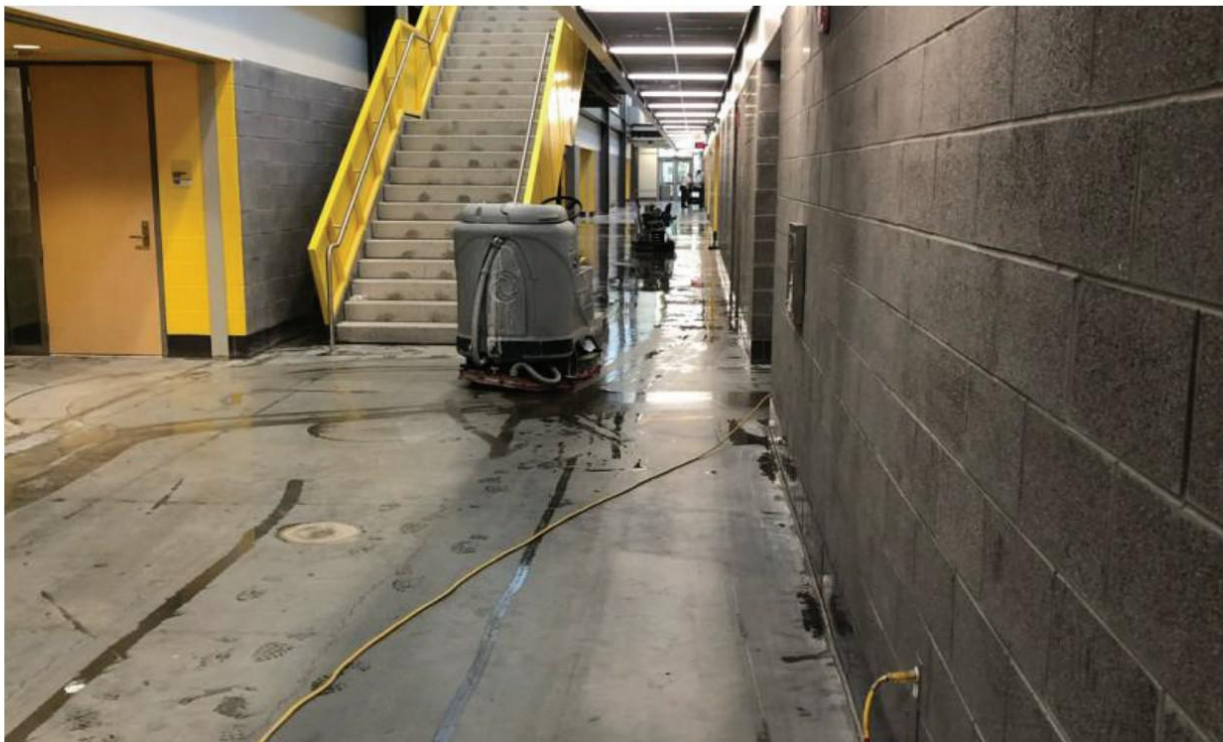
Robert Holmes and his team at **Master Applications, Inc.** were presented with a densified concrete specification which had an owner expectation of a polished concrete floor similar to Home Depot.

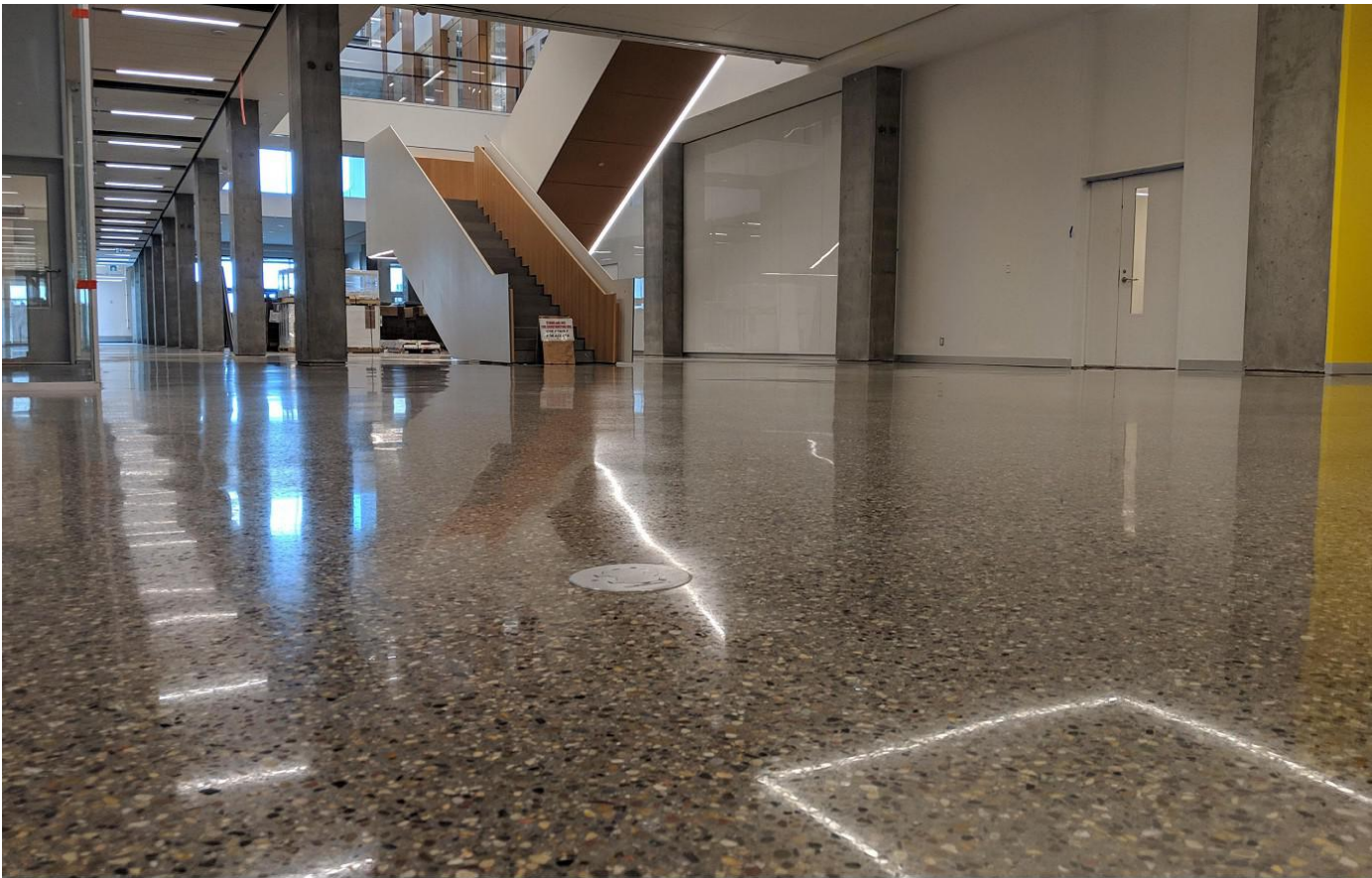
Although the slab was not poured with the expectation that it would be polished, the client was open to polishing what had already been poured and placed.

Master Applications, Inc. presented three mock-ups: an option that followed the specification, a burnished option using the SASE® Galaxy System with Curecrete chemicals, and lastly, a mechanically-polished RetroPlate polished floor.

While the owners found money in the budget to perform the polished concrete system, the architectural firm was confused as to what to specify, therefore causing a delay in the flooring schedule.

When Master Applications, Inc. was finally awarded the contract, they had less than two months to complete the project which included 45,000 ft² of RetroPlate (full 800-grit polish), RetroPel & RetroGuard applications in classrooms, teacher areas and corridors, and 50,000 ft² of Ashford Formula in all tech classrooms - all before the start of the new school year.





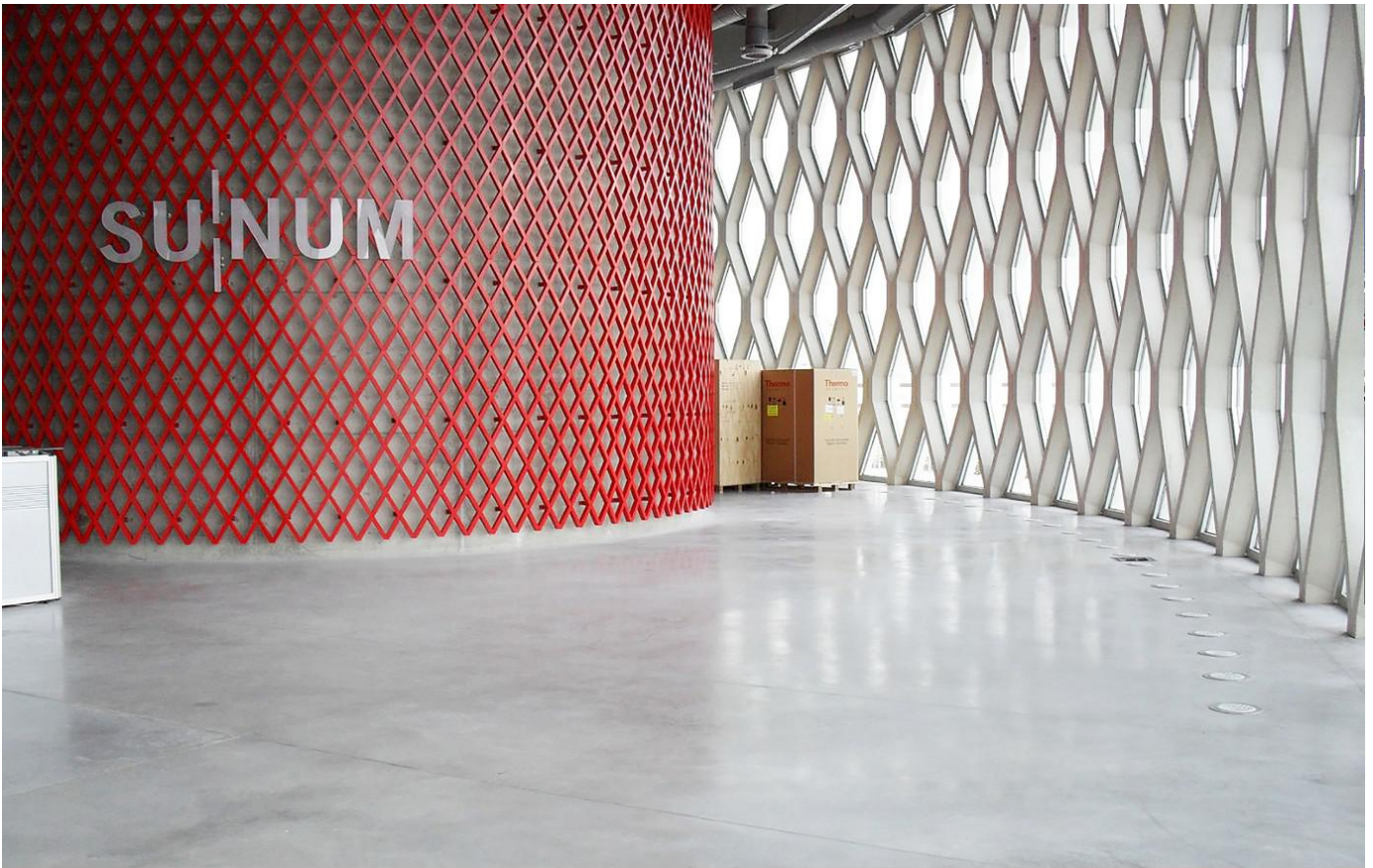


University of Lethbridge

Destination Project

by Concrete Reflections, Inc.
Lethbridge, AB, CANADA (2019) / RetroPlate / Vince Harker & Kyle Harker





Sabanci University

Sabancı Üniversitesi Nanoteknoloji Araştırma ve Uygulama Merkezi (SUNUM)

by **ERA Ltd**

Istanbul, TURKEY (2011) / Ashford Formula / ERA Ltd

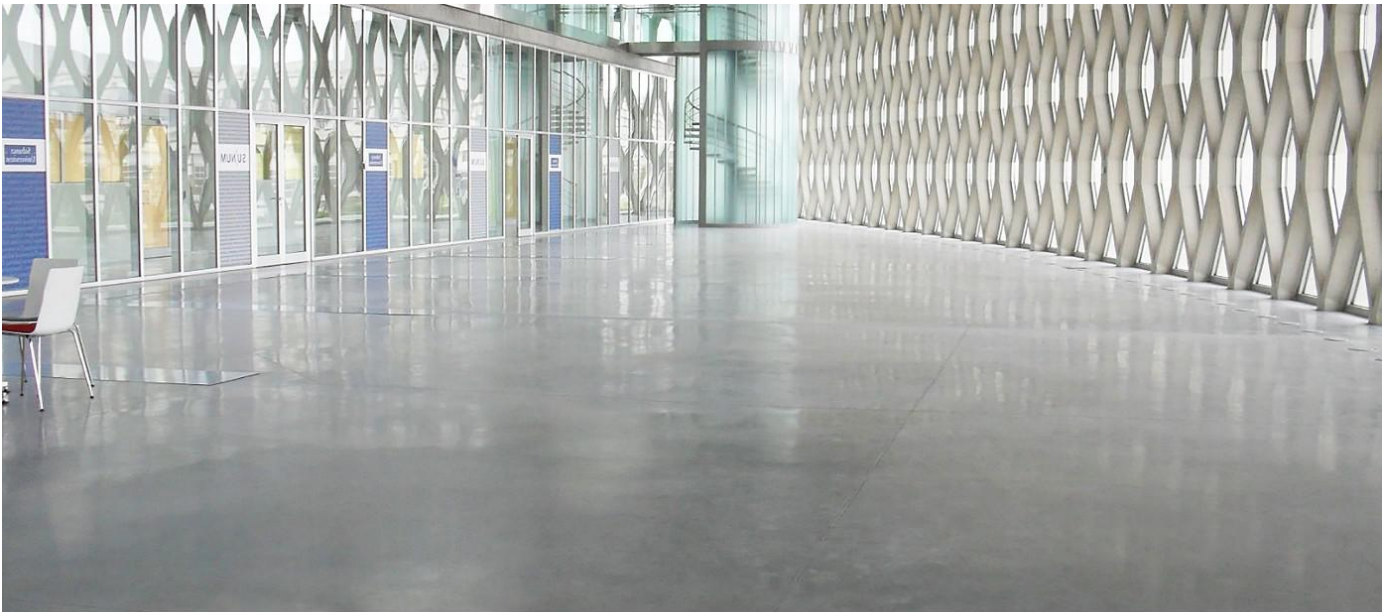
In 2011, the Ashford Formula was applied to approximately 50,000 ft² (5,000 m²) of concrete surfaces at the **Sabancı University Nanotechnology Research and Application Center (SUNUM)** in Istanbul, Turkey by ERA, Ltd.

This was the first building in Turkey which conformed to both LEED and BREEAM GOLD standards. Its architecture takes cues from the human cell - the façade represents the C₆₀ fullerene atomic structure, the spiral staircases

are inspired by DNA, and the cylindrical areas represent carbon nanotubes.

The architects specifically requested a natural concrete floor surface because they desired a non-dusting, non-wearing, easy to clean floor.

Ashford Formula was applied and the results of the project ever since have been impressive.



Senior High School Dorm

by *Transcend Polished Asia, Inc.*

Davao, Philippines (2019) / RetroPlate / Tradetek Resources, Inc.



Project Highlights

**WAREHOUSES &
DISTRIBUTION CENTERS**

Stadler Rail

by *CDC Restoration & Construction*
Salt Lake City, UT (2019) / RetroPlate / Brett Cline

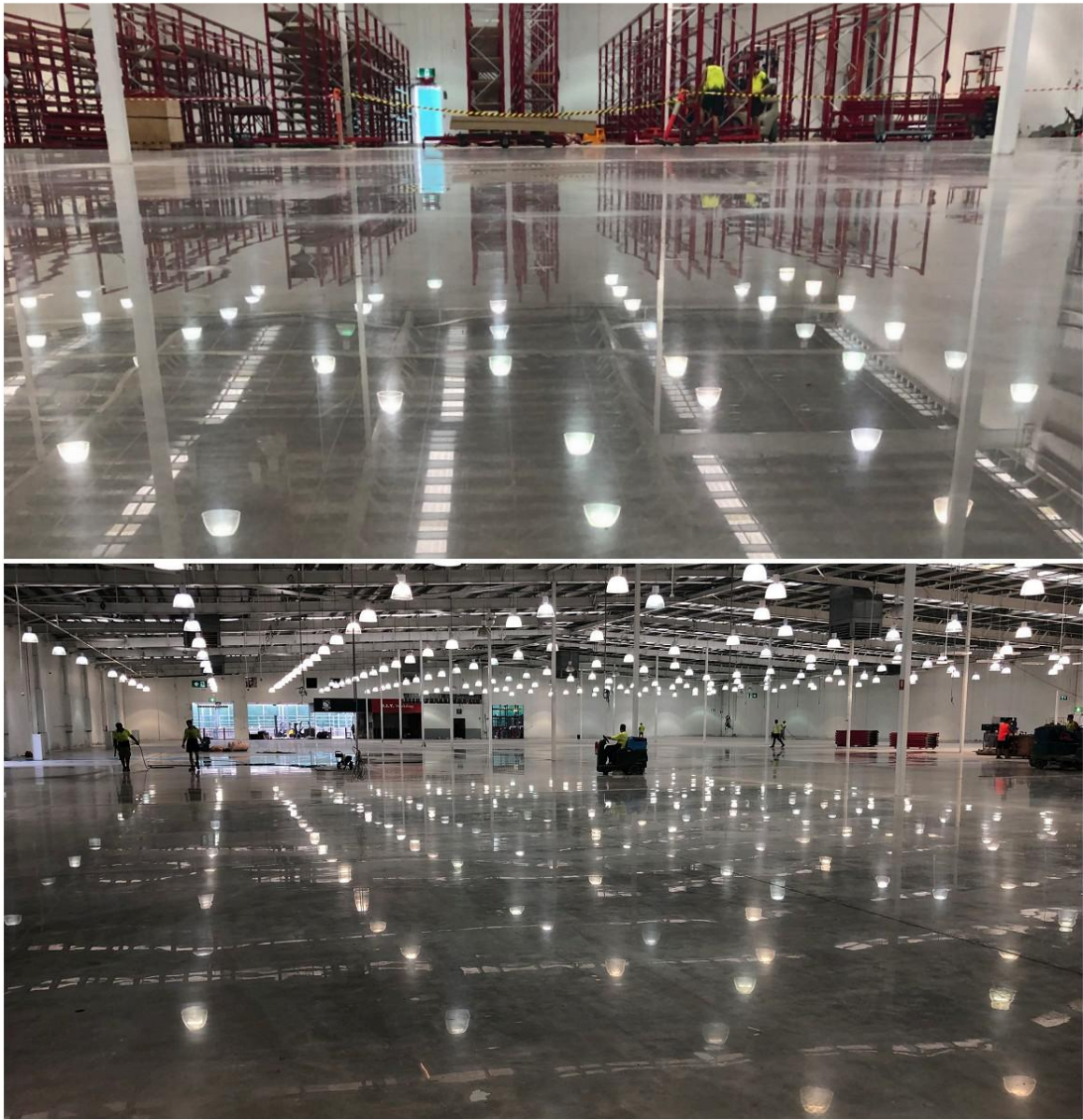






Bunnings Warehouse

by McGinn Concrete
Fairfield Waters, QLD, AUSTRALIA (2019) / RetroPlate / RetroPlate Australia



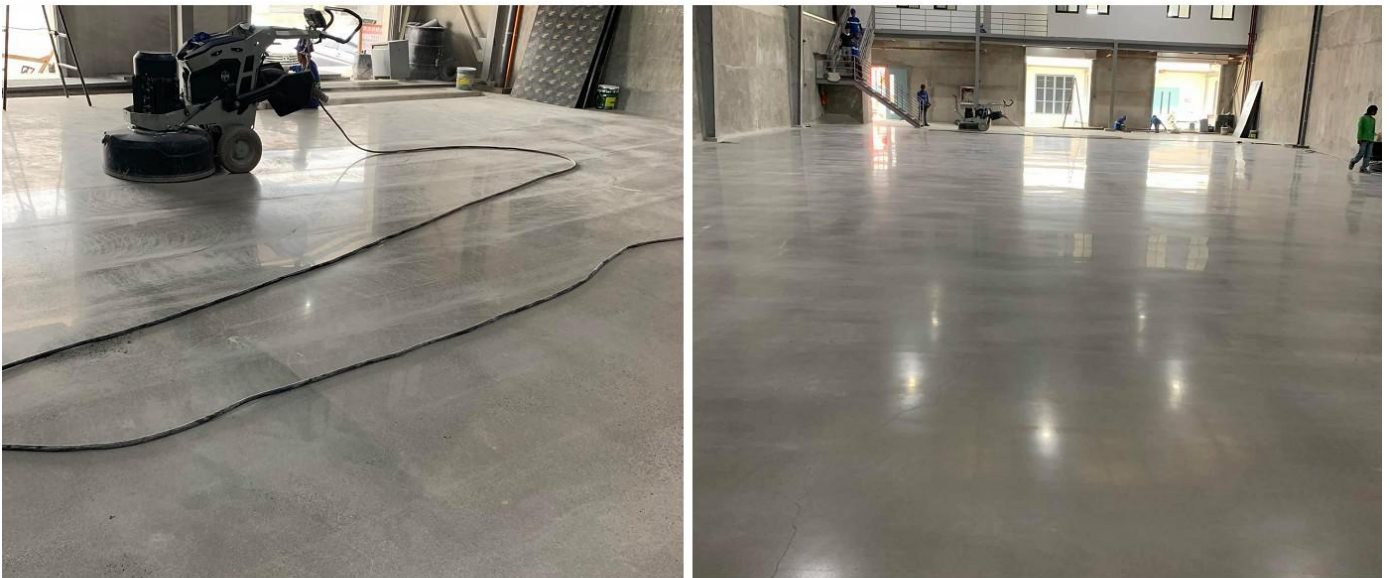
Mills Fleet Farm

by *Surface Prep, Inc.*
Sioux City, IA (2019) / RetroPlate / Mark Tisinger



Connell Brothers

by *Transcend Polished Asia, Inc.*
Taytay, Rizal, PHILIPPINES (2019) / RetroPlate / Tradetek Resources, Inc.



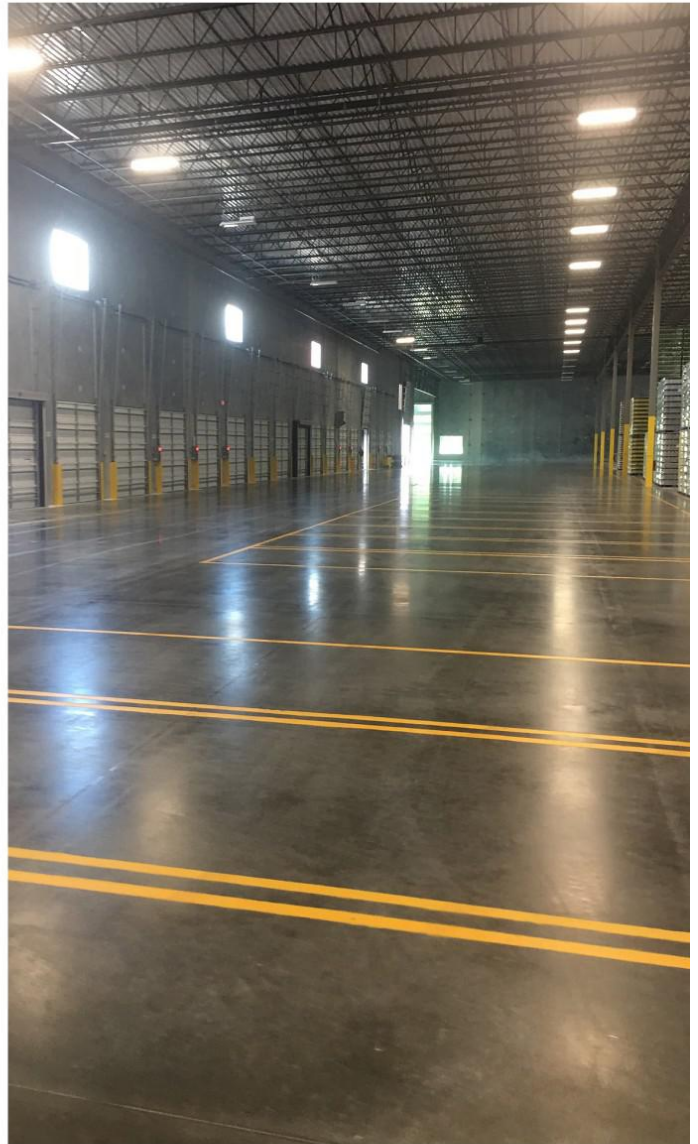
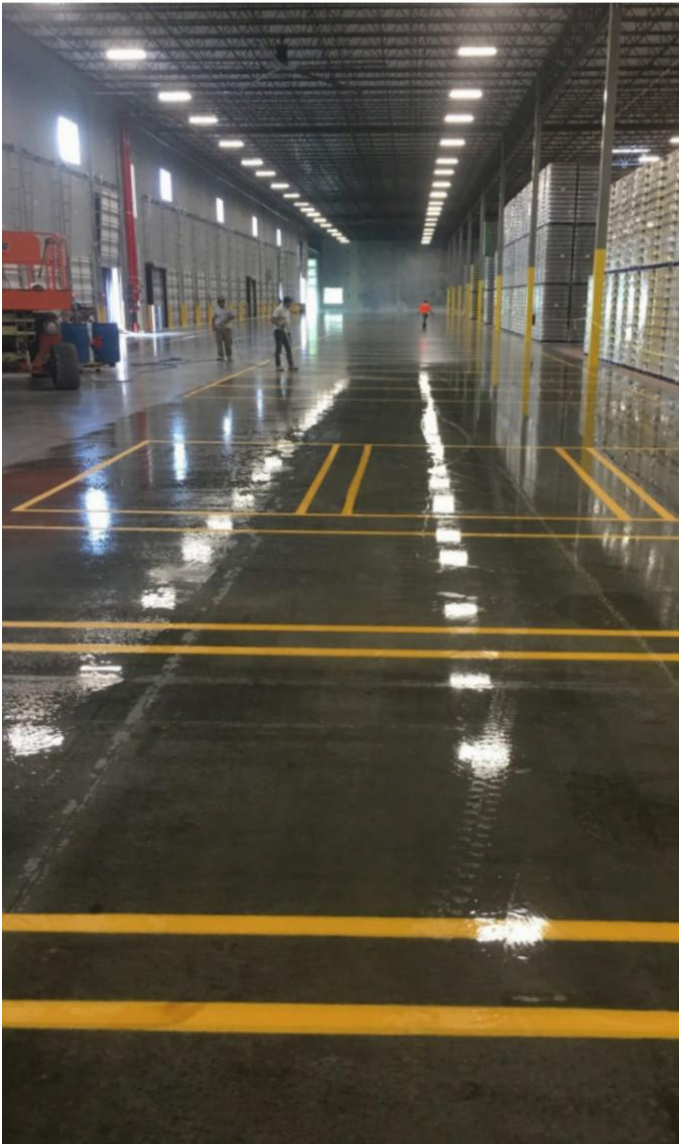
72

County Line

Logistics

by ***Tiger Concrete & Screed, LLC***

Lakeland, FL (2019) / CreteStrip, Ashford Formula / Lori Ossi & Jim Hargis



Bridge Point Commerce Center

by **Jarco Industrial**

Miami Gardens, FL (2019) / Ashford Formula / Jeff Springston

Bridge Point Commerce Center is the latest South Florida development by Bridge Development Partners.

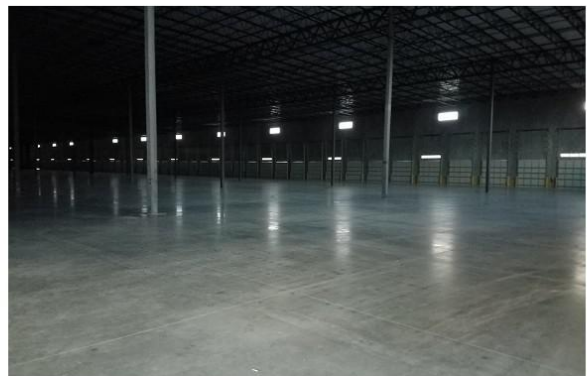
The entire park will encompass 2.1 million square feet, of which the first phase will deliver 1.1 million square feet in the 3rd quarter of 2019.

The park offers frontage on the Florida Turnpike with 155,310 cars passing per day. The park lends itself to various industrial uses including traditional and bulk distribution, light manufacturing and e-commerce. The park's location is equidistant from Miami International Airport and Fort Lauderdale International Airport and offers immediate access to all points in South Florida via the Florida Turnpike and I-75.

Bridge Development Partners chose RLC Architects for the design and Premier Design + Build Group, LLC to build the project. Premier Design + Build Group, LLC chose Jarco Industrial, Inc. to apply the Ashford Formula.

Jarco Industrial started Phase 1 with Buildings A and C on July 1, 2019, Building B on September 9, 2019 and finishing all buildings on September 26, 2019.

Curecrete was instrumental in assisting Jarco Industrial, Inc. in getting 68 Ashford Formula drums delivered to the project.



Valero Alonso Warehouse

by *Durotec Glasstone, SL*

Antas, Almeria, SPAIN (2019) / Ashford Formula / Durotec Glasstone, SL



VESTA Alamar

by *Hermosillo y Asociados*

Tijuana, MEXICO (2019) / Ashford Formula / Ashford Formula de Mexico



Ashford Formula applied as a cure on 17,000 ft² of concrete.

Bell Forklift

by *Applied Floors*

Mt. Morris, MI (2018) / Ashford Formula, RetroPlate, RetroPel / Jerry Reed & Germaine Head

"The Bell Forklift project was probably one of the best Curecrete jobs we have done," says Germaine Head, Curecrete sub-representative for Jerry Reed (Specified Finishes) in the state of Michigan.

The back room of this new facility in Fenton, MI was treated with Ashford Formula after the engineering design firm, Value Engineering, ruled concrete polishing out of the budget. They decided that the Ashford Formula brochure photos were an acceptable look for their "World Class" Toyota forklift facility.

Germaine and the team discussed the age and look of the Ashford Formula floors in the brochure with Siwek Construction - emphasizing that the floors shown were 5-10 year old floors that were frequently washed in order to achieve and maintain its impeccable look. Siwek Construction relayed the information to the owner and they agreed to move forward.

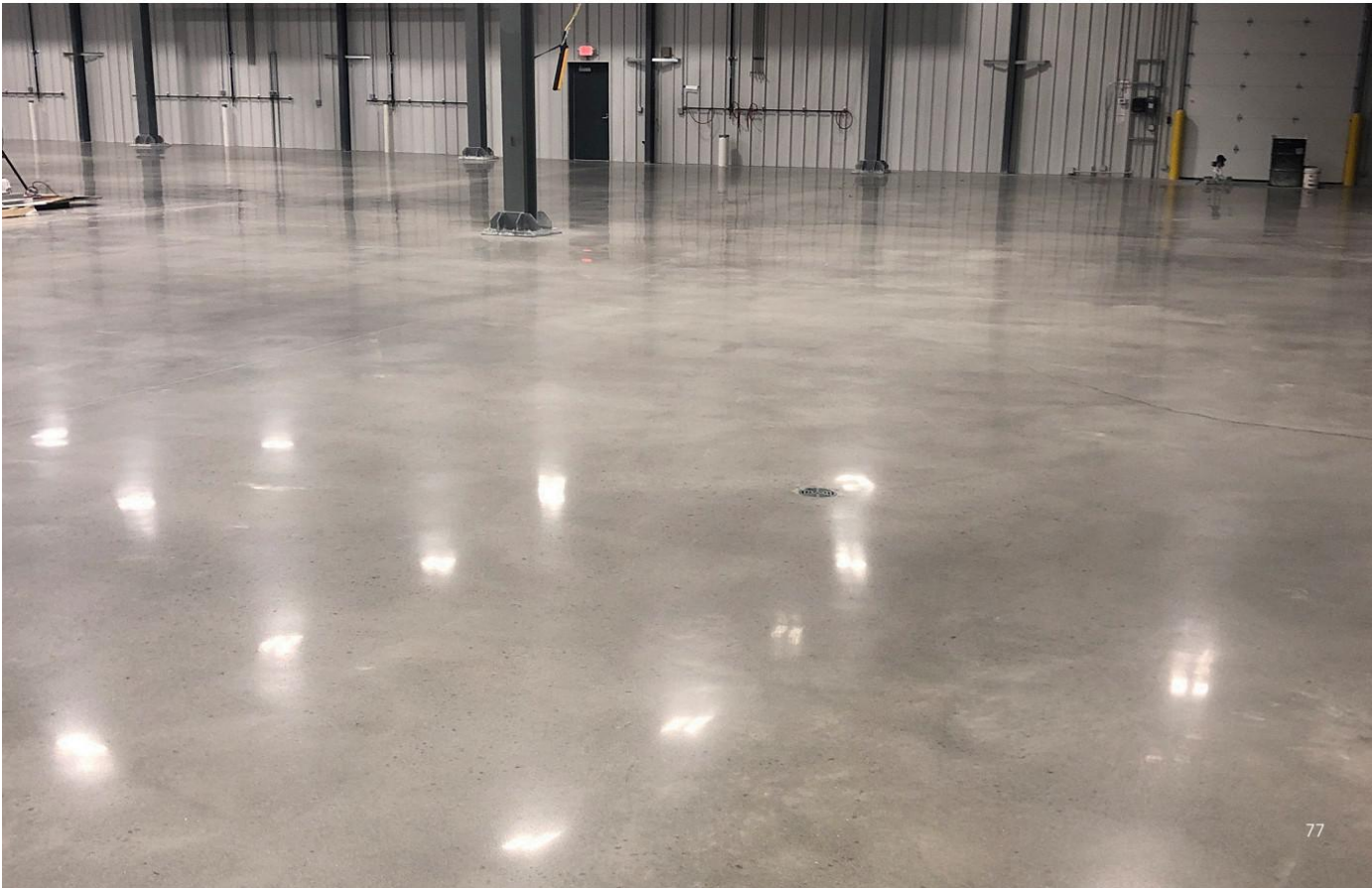
When the floor of the back room was completed, which

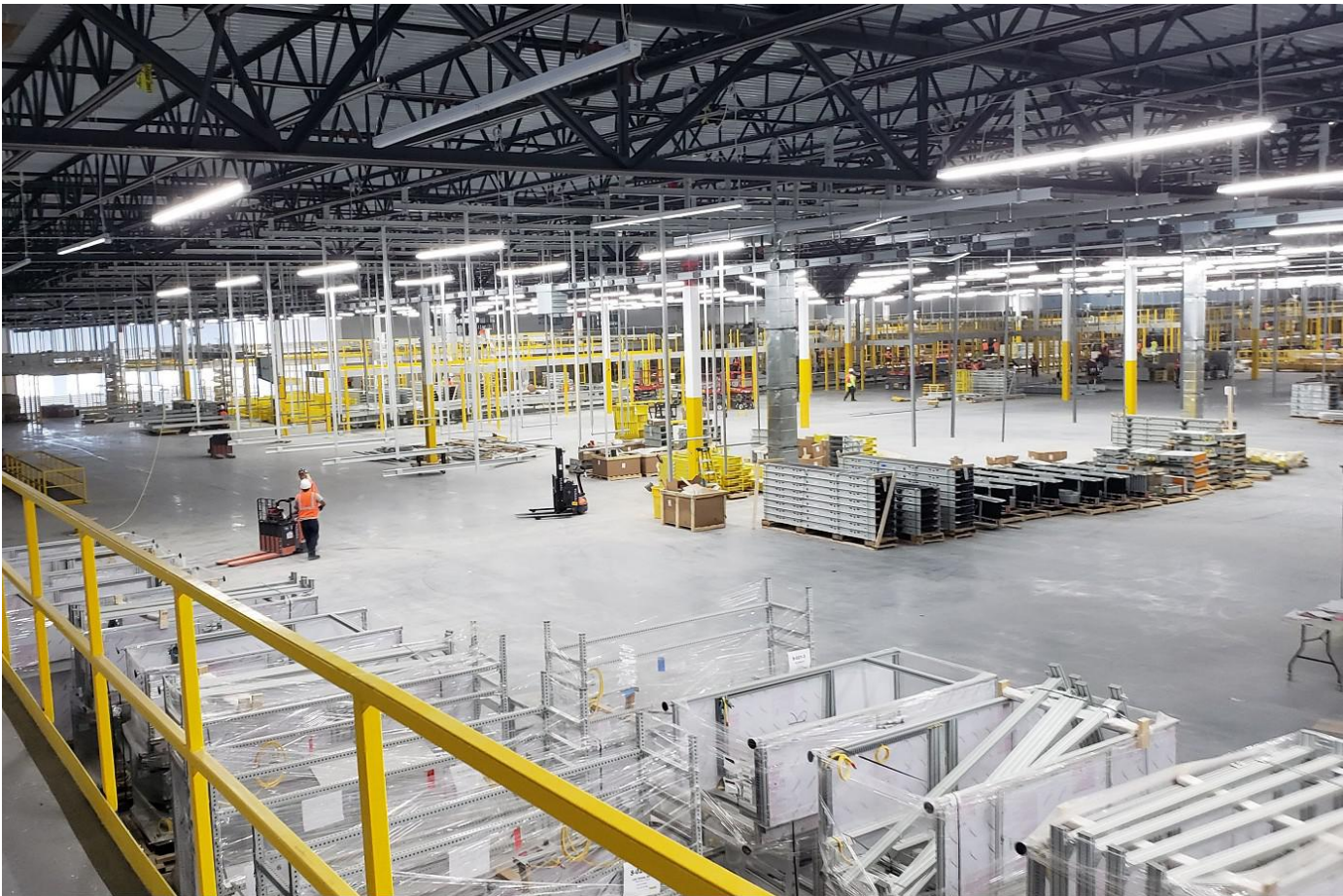
was blotchy at best, the owners were not happy with the results. Hoping to remedy this issue, the applicator team spritzed the floor with Ashford Formula and burnished it - greatly improving the look of the floor. But the owners were still not satisfied. They hated the burn marks left in the concrete by the power trowel, which of course, were the shiniest and darkest spots of the floor.

At an impasse with an angry and unsatisfied owner and customer, the applicator team, Applied Floors, did a test area of polished concrete with the RetroPlate system, polishing the concrete with a power trowel starting at 50-grit to remove the burn marks in the floor and to even out the color.

After reviewing the test area, the owner gave the green light to polish the floors and Applied Floors polished the service area and applied Retro Plate and RetroPel on this "World Class" Toyota forklift facility. The results are stunning!

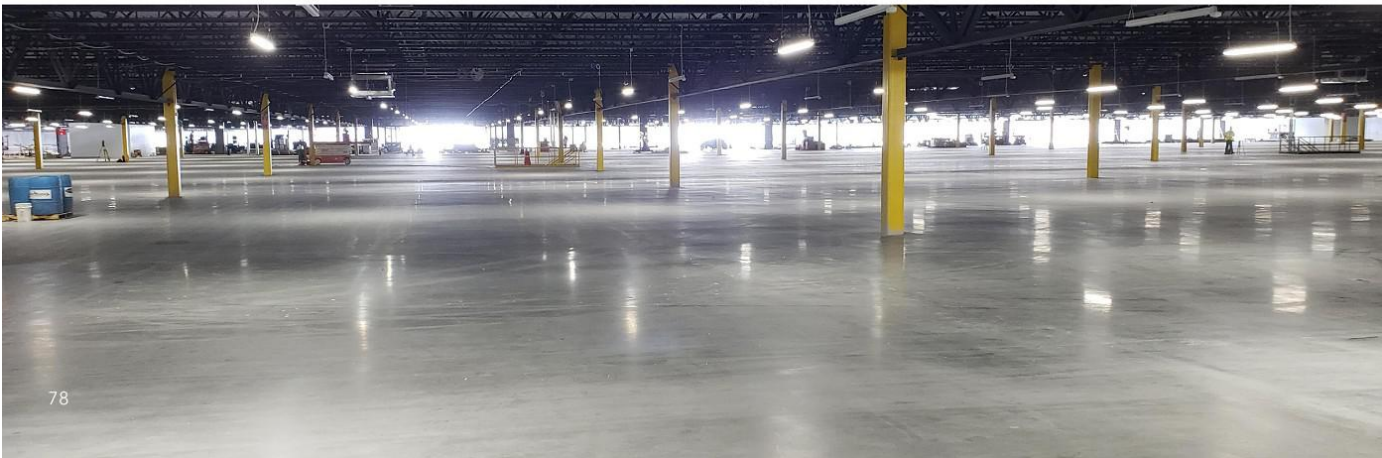






Amazon.com

by *Concrete Diamond Polishing Innovations*
Las Vegas, NV (2019) / Ashford Formula / Brett Cline





Obayashi / Kajima / Taisei Warehouse

by **Ashford Formula Vietnam**
VIETNAM (2019) / Ashford Formula / Ashford Formula Vietnam

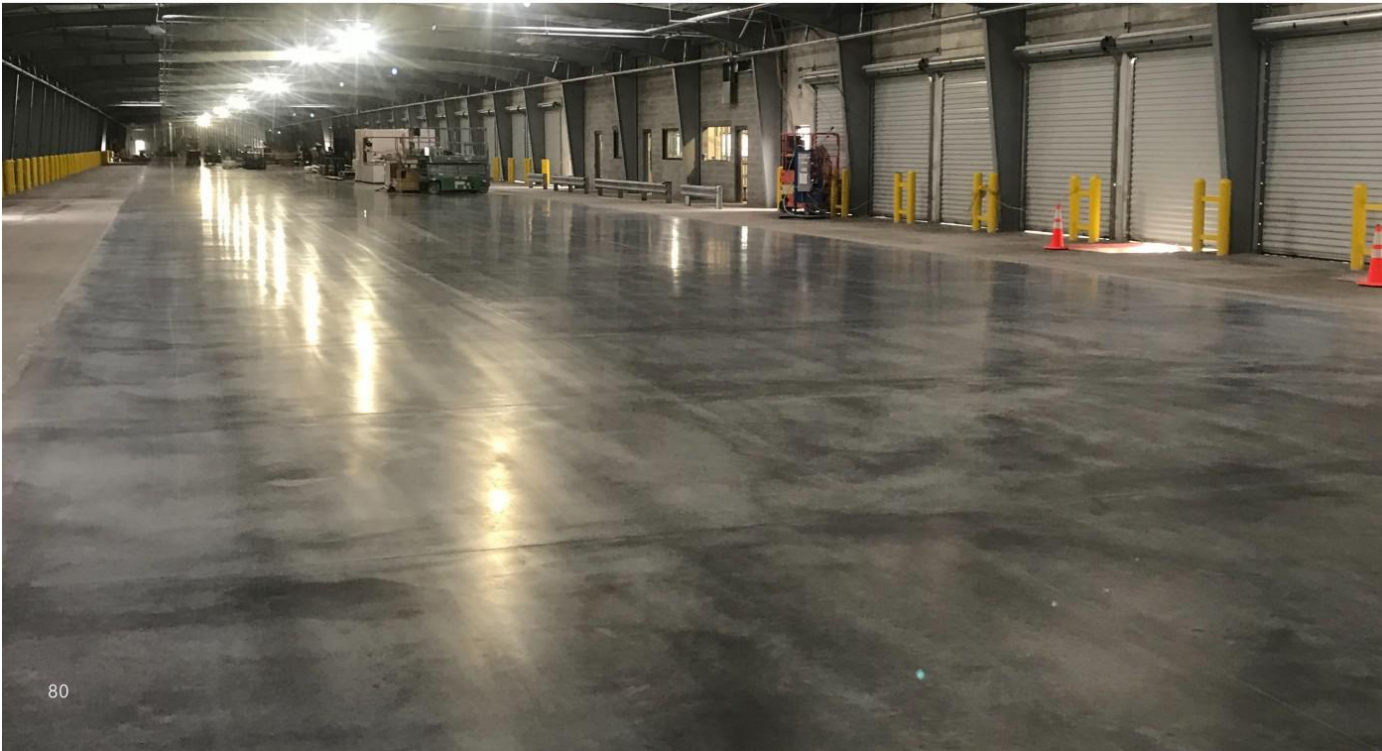
After more than 10 years of hard work and effort, Ashford Formula Vietnam was finally able to partner with Obayashi, Kajima and Taisei construction companies to apply the Ashford Formula on a large warehouse project in Vietnam. While these large, Japanese construction companies typically only use Japanese products, Brian and his team were finally able to win over these companies and show them what the Ashford Formula can do.





Dayton Freight

by D.R. Clark
Greenwood, IN (2019) / Ashford Formula / Byron Decapua



Exemplis

by *Tec-Crete & Hermosillo y Asociados*
Tijuana, MEXICO (2019) / Ashford Formula / Ashford Formula de Mexico



CJ DAEHANTONGWUN

Distribution Center

by *Ildo T.C.S.*
Kyenggido, SOUTH KOREA (2018) / Ashford Formula / Ildo T.C.S.



Eastpark 70 Building

by *All West Surface Prep*

Aurora, CO (2019) / Ashford Formula / Bob Cuje

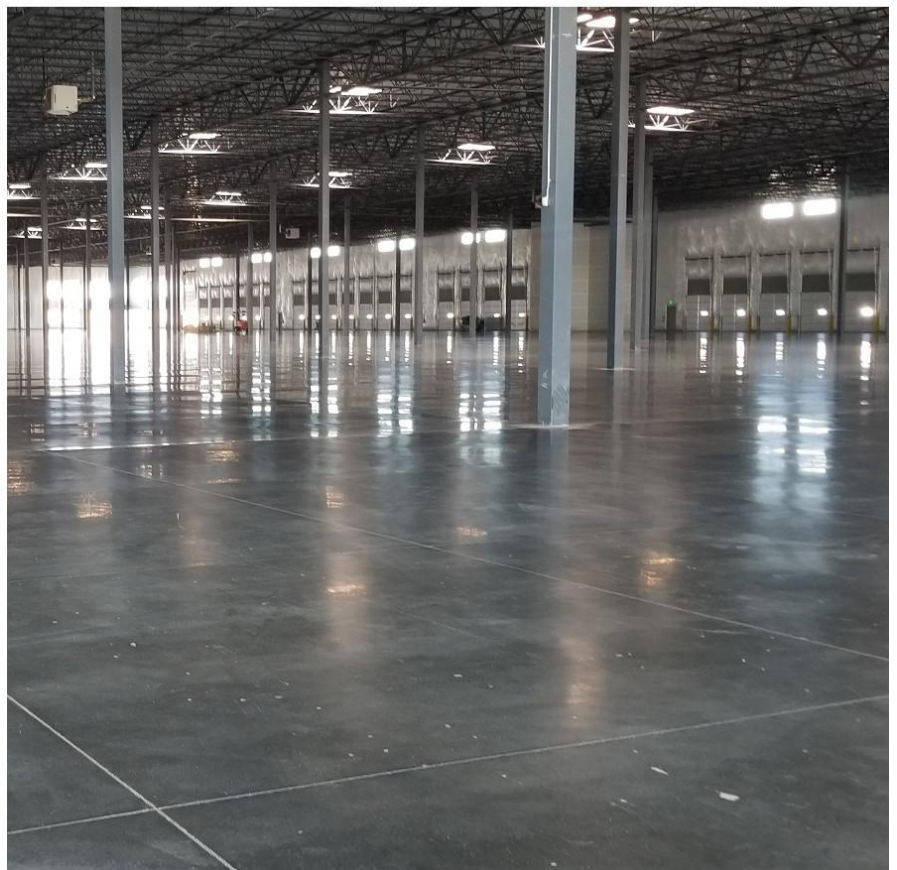
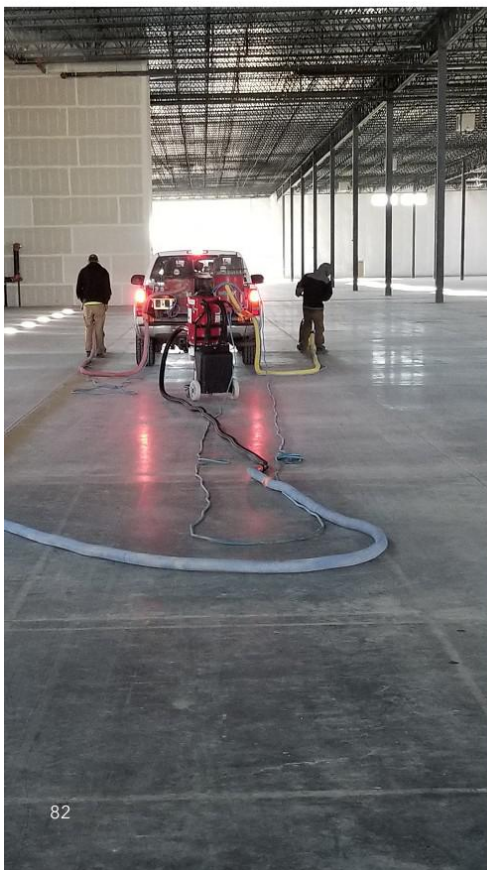
This project began with a phone call to fix a very odd problem. A company in Aurora, Colorado poured a floor between January and February 2018. During that time, the city experienced a bout of very high winds over the course of a few days. It was determined that wind dusted the floor with tiny rocks and sediment sometime during the power troweling phase. These sedimentary particles created weak points in the top membrane (cap) of the slab.

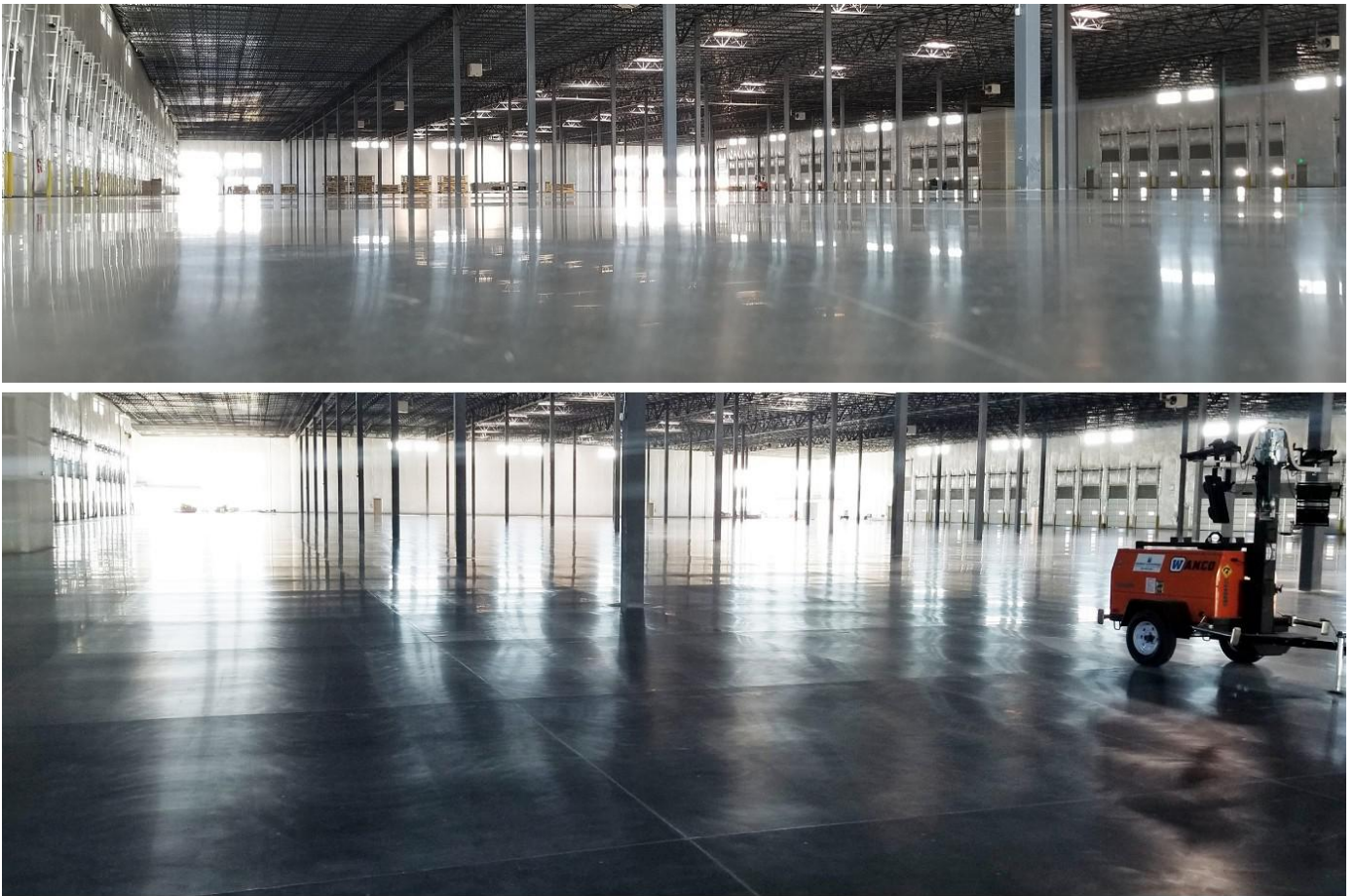
During the cleaning phase, these weak points gave way to reveal small, shallow, pockmark-like holes, ranging in size from 1/16 to 3/4 of an inch in width and between 1/32 and 1/8 inches in depth. These holes were present throughout the entire 250,000 square foot facility, along with saw scum lines, wind cracking and broadcast lines from wall forms being glued to the slab.

Apart from these issues, the floor had a well-executed hard trowel finish with a trowel burned shine. Core testing showed the floor was structurally sound and up to specification. However, the client decided that removing the pockmark holes were necessary, fearing the potential spread of the problem and the creation of unforeseen issues in the future. Beyond eliminating the holes, any results achieved with shine or cleaning the slab overall would be a bonus to the client.

There were three objectives to achieving the result desired by the owner:

- 1. Removal of the pockmarks via "heavy" grinding.** The initial grind needed to be aggressive enough to remove the holes, while not creating too much work and expense to achieve a shine on the back-end. While the client





wanted to remedy the problem, they did not want to spend an arm and a leg doing so.

2. Dustproof the slab. A grind heavy enough to remove the holes would surely remove the cap created during placement, leaving the slab untreated and exposed. For this objective, the Ashford Formula was the clear and perfect solution.

3. Re-establish the shine. This floor started out moderately shiny, and a matte densified floor would not have been ideal. Burnishing was therefore integrated into the Ashford Formula densification process.

With the Ashford Formula as the backbone of the plan, this floor would not only be fixed, it would exceed all expectations. Its rich coverage rate, when compared to other products on the market such as lithics, is an absolute deluge of material at 200-250 square feet per gallon. It can be used on old or new slabs, in the beginning of a project as a cure, or at the end to dustproof. Its versatility will give applicators and contractors the confidence to successfully use the product in out-of-the-box solutions for unique issues. To top it all off, the floor gets better over time with traffic and usage!

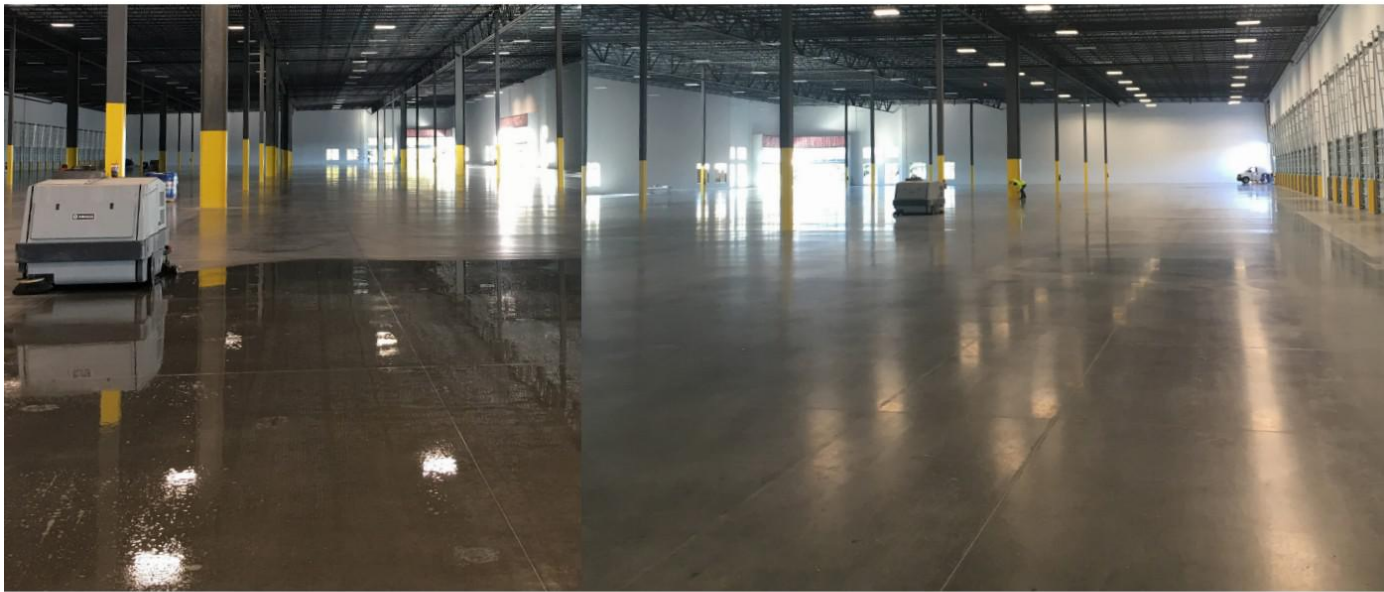
The outcome of this project was a gorgeous floor that brought in personnel from all levels of the client's company to see the "sexy floor". Though this client is a major builder of warehouses in the Denver, Colorado area, the sentiment echoed over the course of this job was that it was "the best floor in the company."

In this industry, applicators are presented with "unicorns" they are asked to fix. This can sometimes be a daunting task from which most will walk away from. Having a great plan is essential, but having the right tools to drive that plan is key. With the Ashford Formula, customers can have peace of mind that a band-aid isn't being put on the issue. More importantly, professionals can deliver truly stunning results and offer long-lasting solutions to problems that no one else can or wants to fix.

The Ashford Formula is an expert's product capable of delivering eye-catching, next-level results. This resonates the world over through a sterling 70-year reputation, one that any applicator will be proud to expand upon!

Meridian Center North Complex

by *Tiger Concrete & Screed, LLC*
Fort Myers, FL (2018) / Ashford Formula / Lori Ossi & Jim Hargis





1203 SPRING CREEK PLACE, SPRINGVILLE, UTAH 84663
801-489-5663 WWW.CURECRETE.COM

