

Through a patented process of diamond grinding, concrete polishing and densification through the specifically formulated RetroPlate® densifier, the RetroPlate® Concrete Polishing System transforms concrete into surfaces of permanent strength, beauty and longevity. The RetroPlate® Concrete Polishing System is truly a “green” total flooring solution, and the natural answer for your flooring needs.

Since 1996, this process has been transforming new and old concrete into strong, durable and beautiful surfaces. RetroPlate® will enhance industrial, retail or commercial concrete floors, while eliminating the ongoing costs of coatings and floor covering failures.



In 2006, the RetroPlate® System was named one of the *Top-10 Green Building Products* by **GreenSpec** and **Environmental Building News**.

The RetroPlate® system reduces negative impact during construction and demolition, contains no VOCs, is durable and low maintenance and can reduce light level requirements by 30%.

The RetroPlate® System is also a LEED point contributor and has been used on Silver, Gold and Platinum LEED Projects. Most notably, it was selected to finish the main-level, multi-purpose space of the **University of Calgary's Child Development Center**, which received one of the highest LEED ratings at the time.



Advanced Floor Products

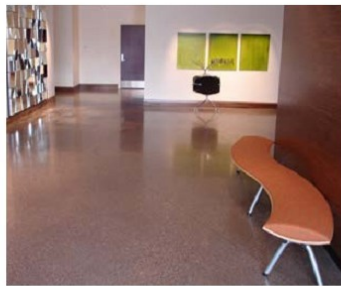
P.O. Box 50533
Provo, UT 84605 USA

office: 888.942.3144
fax: 801.812.3400

www.retroplatesystem.com



THE ORIGINAL CONCRETE POLISHING SYSTEM



And you thought concrete was boring...



Level A



Level A, Heavy Aggregate, Colored, Office



Level A, Cream, Natural, Retail, New



Level A, Heavy Aggregate, Colored, Hotel Lobby Restaurant



Level A, Cream, Stain, Educational



Level B



Level B, Cream, Natural Color, Auto Repair, 5 Years



Level B, Cream, Natural Color, Retail, 7+ Years Old



Level B, Cream, 2 Tone Stain, Retail



Level B, Cream, Chocolate Brown & Burnt Sienna Dye, Church



Level B, Cream, Natural Color, Auto Repair, 3 Years Old



Level B, Cream, Dry Shake-On Hardener, Natural Color, Educational, 7 Years Old



Level B, Cream, Colored, Acid Stain, Grocery, 6+ Years Old



Level B, Cream, Natural Color, Parts Warehouse, 6 Years Old



Level B, Cream, Natural Color, Retail, 5 Years Old



Level B, Cream, Natural Color, Retail, 3 Years Old



Level B, Cream, Natural Color, Convention Center



Level B, Cream, Natural, Aviation Repair Shop, 4+ Years Old



Level B, Cream, Stain, 2 Tone, Grocery



Level B, Cream, Stain, Multi-Color, Educational, 2 Years Old



Level B, Cream, Natural Color, Manufacturing



Level B, Heavy Aggregate, Integral Color, Hotel



Level B, Heavy Aggregate, Natural Color, Hardware Store, 3 Years Old



Level B, Light Aggregate, Natural Color, Retail, 6+ Years Old



Level B, Light Aggregate, Natural Color, Correctional Facility, 5+Years Old



Level B, Medium Aggregate, Natural Color, Educational



Level B, Medium Aggregate, Natural Color, Fire Station



Level B, Medium Aggregate, Natural Color, Office, 9+ Years Old



Level B, Medium Aggregate, Integral Color, Church, 8 Years Old



Level B, Cream, Gray Color, Hospital, 3 Years Old



Level B, Medium Aggregate, Natural Color, Educational



Level B, Medium Aggregate, Natural Color, Educational



Level B, Medium Aggregate, Stained, Restaurant, 4+ Years Old



Level B, Salt & Pepper Aggregate, Dry Shake-On Hardener, Natural Color, Educational, 6+ Years Old



Level B, Salt & Pepper Aggregate, Natural Color, Retail, 3+ Years



Level C



Level C, Cream, 2 Tone Stain Color, Manufacturing, 3+ Years Old



Level C, Cream, Multi-Color Stain, Retail, 4+ Years Old



Level C, Cream, Multi-Color Stain, Restaurant, 4+ Years Old



Level C, Light Aggregate, Colored, Manufacturing, 3+ Years Old



Level C, Cream, Natural Color, Retail, 6+ Years Old



Level C, Cream, Natural Color, Warehouse



Level C, Heavy Aggregate, Dye, Airplane Hangar, 5+ Years Old



Level C, Heavy Aggregate, Dye, Airplane Hangar, 5+ Years Old



Level C, Light Aggregate, Stain, Office



Level C, Cream, Stain, Warehouse, 4 Years Old



Level C, Medium to Heavy Aggregate, Natural & Stain, Office



Level C, Medium to Heavy Aggregate, Black Dye, Educational

Through a patented process of diamond grinding, concrete polishing and densification through the specifically formulated RetroPlate® densifier, the RetroPlate® Concrete Polishing System transforms concrete into surfaces of permanent strength, beauty and longevity. The RetroPlate® Concrete Polishing System is truly a “green” total flooring solution, and the natural answer for your flooring needs.

Since 1996, this process has been transforming new and old concrete into strong, durable and beautiful surfaces. RetroPlate® will enhance industrial, retail or commercial concrete floors, while eliminating the ongoing costs of coatings and floor covering failures.



In 2006, the RetroPlate® System was named one of the *Top-10 Green Building Products* by **GreenSpec** and **Environmental Building News**.

The RetroPlate® system reduces negative impact during construction and demolition, contains no VOCs, is durable and low maintenance and can reduce light level requirements by 30%.

The RetroPlate® System is also a LEED point contributor and has been used on Silver, Gold and Platinum LEED Projects. Most notably, it was selected to finish the main-level, multi-purpose space of the **University of Calgary's Child Development Center**, which received one of the highest LEED ratings at the time.



Advanced Floor Products

P.O. Box 50533
Provo, UT 84605 USA

office: 888.942.3144
fax: 801.812.3400

www.retroplatesystem.com